

**TECHNICAL MANUAL
DIRECT SUPPORT AND GENERAL SUPPORT
MAINTENANCE REPAIR PARTS AND
SPECIAL TOOLS LIST
(INCLUDING DEPOT MAINTENANCE REPAIR
PARTS AND SPECIAL TOOLS)
FOR
MAST AB-621A/G
(NSN 5985-00-061-2828)
AND
EXTENSION KIT MK-2044/G
(NSN 5985-01-119-2925)**

HEADQUARTERS, DEPARTMENT OF THE ARMY

7 OCTOBER 1982

**DIRECT SUPPORT AND GENERAL SUPPORT MAINTENANCE
 REPAIR PARTS AND SPECIAL TOOLS LIST
 (INCLUDING DEPOT MAINTENANCE REPAIR
 PARTS AND SPECIAL TOOLS)
 FOR
 MAST AB-621A/G (NSN 5985-00-061-2828)
 AND
 EXTENSION KIT MK-2044/G (NSN 5985-01-119-2925)**

Current as of 19 May 1982

REPORTING ERRORS AND RECOMMENDING IMPROVEMENTS

You can help improve this manual. If you find any mistakes or if you know of a way to improve the procedures, please let us know. Mail your letter, DA Form 2028 (Recommended Changes to Publications and Blank Forms), or DA Form 2028-2 located in back of this manual direct to: Commander, US Army Communications-Electronics Command and Fort Monmouth, ATTN: DR-SEL-ME-MP, Fort Monmouth, NJ 07703.

In either case, a reply will be furnished direct to you.

Table of Contents

SECTION		Page	Illus Figure
I.	Introduction	1	
II.	Repair Parts List	5	
00.	Mast, Antenna AB-621A/G	5	1
	Carrier Assembly	7	2
	Guy Ring, Middle	9	3
	Guy Ring, Upper	11	4
	Winch Assembly	13	5
	Crank, Hand Assembly	15	6
	Peepsight Assembly	17	7
	Stake GP-112	19	8
	Ladder Assembly	21	9
01.	Launcher	25	10
	Level, Mast Assembly	27	11
	Guide Assembly	31	12
	Brake Assembly	33	13
	Elevator Assembly	37	14
	Index Pin Assembly	39	15
	Cup Assembly Elevator	41	16
	Reel Assembly	43	17
00.	Extension Kit MK-2044/G	47	18
	Mast Carrier Assembly	49	19

		Page	Illus Figure
	Ground Cleat Assembly.....	51	20
	Winch Assembly	53	21
	Lock-Out Assembly	55	22
	Transit Case Assembly.....	57	23
01	Guy Control Device.....	59	24
	Gear Box Assembly	61	25
	Ratchet Release Arm Assembly.....	63	26
	Cable Retainer Spring Assembly.....	65	27
	Reel Assembly.....	67	28
	Crank Handle Assembly	69	29
SECTION III.	Special Tools List (Not applicable)		
IV.	National Stock Number and Part Number Index	70	

**SECTION I
INTRODUCTION**

1. Scope

This manual lists spares and repair parts; special tools; special test, measurement, and diagnostic equipment (TMDE), and other special support equipment required for performance of direct support and general support maintenance of the AB-621A/G and MK-2044/G. It authorizes the requisitioning and issue of spares and repair parts as indicated by the source and maintenance codes.

2. General

This Repair Parts and Special Tools List is divided into the following sections:

a. Section II. Repair Parts List. A list of spares and repair parts authorized for use in the performance of maintenance. The list also includes parts which must be removed for replacement of the authorized parts. Parts lists are composed of functional groups in numeric sequence, with the parts in each group listed in figure and item number sequence.

b. Section III. Special Tools List. Not applicable.

c. Section IV. National Stock Number and Part Number Index. A list, in National item identification number (NIIN) sequence, of all National stock numbers (NSN) appearing in the listings, followed by a list, in alphanumeric sequence, of all part numbers appearing in the listings. National stock numbers and part numbers are cross-referenced to each illustration figure and item number appearance.

3. Explanation of Columns

a. Illustration. This column is divided as follows:

(1) Figure number. Indicates the figure number of the illustration on which the item is shown.

(2) Item number. The number used to identify item called out in the illustration.

b. Source, Maintenance, and Recoverability (SMR) Codes.

(1) Source code. Source codes indicate the manner of acquiring support items for maintenance, repair, or overhaul of end items. Source codes are entered in the first and second positions of the Uniform SMR Code format as follows:

<i>Code</i>	<i>Definition</i>
PA -	Item procured and stocked for anticipated or known usage.

<i>Code</i>	<i>Definition</i>
PB -	Item procured and stocked for insurance purpose because essentiality dictates that a minimum quantity be available in the supply system.
PD -	Support item, excluding support equipment, procured for initial issue or outfitting and stocked only for subsequent or additional initial issues or outfittings. Not subject to automatic replenishment.
AF -	Item to be assembled at direct support maintenance level.
XA -	Item is not procured or stocked because the requirements for the item will result in the replacement of the next higher assembly.
XD -	A support item that is not stocked. When required, item will be procured through normal supply channels.

NOTE

Cannibalization or salvage may be used as a source of supply for any items source coded above except those coded XA and aircraft support items as restricted by AR 700-42.

(2) Maintenance code. Maintenance codes are assigned to indicate the levels of maintenance authorized to USE and REPAIR support items. The maintenance codes are entered in the third and fourth positions of the Uniform SMR Code format as follows:

(a) The maintenance code entered in the third position will indicate the lowest maintenance level authorized to remove, replace, and use the support item. The maintenance code entered in the third position will indicate one of the following levels of maintenance:

<i>Code</i>	<i>Application/Explanation</i>
O -	Support item is removed, replaced, used at the organizational level.
F -	Support item is removed, replaced, used at the direct support level.
H -	Support item is removed, replaced, used at the general support level.
D -	Support items that are removed, replaced, used at depot, mobile depot, specialized repair activity only.
	<i>(b)</i> The maintenance code entered in the

to fourth position indicates whether the item is to be repaired and identifies the lowest maintenance level with the capability perform complete repair (i.e., all authorized maintenance functions). This position will contain one of the following maintenance codes:

<i>Code</i>	<i>Application/Explanation</i>
O -	The lowest maintenance level capable of complete repair of the support item is the direct support level.
H -	The lowest maintenance level capable of complete repair of the support item is the general support level.
D -	The lowest maintenance level capable of complete repair of the support item is the depot level.
Z -	Nonreparable. No repair is authorized.

(3) *Recoverability code.* Recoverability codes are assigned to support items to indicate the disposition action on unserviceable items. The recoverability code is entered in the fifth position of the Uniform SMR Code format as follows:

<i>Recoverability codes</i>	<i>Definition</i>
Z -	Nonreparable item. When unserviceable, condemn and dispose at the level indicated in position 3.
F -	Reparable item. When uneconomically repairable, condemn and dispose at the direct support level.
H -	Reparable item. When uneconomically repairable, condemn and dispose at the general support level.
D -	Reparable item. When beyond lower level repair capability, return to depot. Condemnation and disposal not authorized below depot level

c. *National Stock Number.* Indicates the National stock number assigned to the item and will be used for requisitioning purposes.

d. *Federal Supply Code for Manufacturer(FSCM).* The FSCM is a 5-digit numeric code listed in SB 708-41/42 which is used to identify the manufacturer, distributor, or Government agency, etc.

e. *Part Number.* Indicates the primary number used by the manufacturer (individual, company, firm, corporation, or Government activity), which controls the design and characteristics of the item by means of its engineering drawings, specifications, standards, and inspection requirements to identify an item or range of items.

NOTE

When a stock numbered item is requisitioned, the repair part received may have a different part number than the part being replaced.

f. *Descriptions* Indicates the Federal item name and, if required, a minimum description to identify the item.

g. *Unit of Measure (U/M).* Indicates the standard of the basic quantity of the listed item as used in performing the actual maintenance function. This measure is expressed by a two-character alphabetical abbreviation (e.g., ea, in, pr, etc). When the unit of measure differs from the unit of issue, the lowest unit of issue that will satisfy the required units of measure will be requisitioned.

h. *Quantity Incorporated in Unit.* Indicates the quantity of the item used in the breakout shown on the illustration figure, which is prepared for a functional group, subfunctional group, or an assembly.

4. Special Information

a. Usable on codes are shown in the description column. Uncoded items are applicable to all models. Identification of the usable on codes used in this publication are:

<i>Code</i>	<i>Used on</i>
EMH	MK-2044/G
ENR	AB-621A/G

b. Detailed assembly instructions for items source coded to be assembled are found in TM 11-5985-334-34. Assembly components are listed immediately following the item to be assembled.

c. The following publications pertain to the AB-621A/G and MK-2044/G and its components: TM 11-5985-334-10, Mast AB-621/G and Mast AB-621A/G (To be published).

TM 11-5985-334-20, Mast AB-621/G and Mast AB-621A/G (To be published).

TM 11-5985-334-20P-1, Mast AB-621A/G (To be published).

TM 11-5985-334-34, Mast AB-621/G and Mast AB-621A/G (To be published).

d. National stock numbers (NSN's) that are missing from P source coded items have been applied for and will be added to this TM by future change/revision when they are entered in the Army Master Data File (AMDF). Until the NSN's are established and published, submit exception requisitions to: Commander, US Army Communications-Electronics Command ATTN: DRSEL-ME-MM, Fort Monmouth, NJ 07703 for the part required to support your equipment.

5. How to Locate Repair Parts

a. When National stock number or part number is unknown.

(1) *First.* Using the table of contents, determine the functional group within which the item belongs.

This is necessary since illustrations are prepared for functional groups and listings are divided into the same groups.

(2) *Second.* Find the illustration covering the functional group to which the item belongs.

(3) *Third.* Identify the item on the illustration and note the illustration figure and item number of the item.

(4) *Fourth.* Using the Repair Parts Listing, find the figure and item number noted on the illustration.

b. When National stock number or part number is known.

(1) *First.* Using the Index of National Stock Numbers and Part Numbers, find the pertinent National stock number or part number. This index is in NIIN sequence followed by a list of part numbers in alphanumeric sequence, cross-referenced to the illustration figure number and item number.

(2) *Second.* After finding the figure and item number, locate the figure and item number in the repair parts list.

6. Abbreviations

Not applicable.

(Next printed page is 4.1)

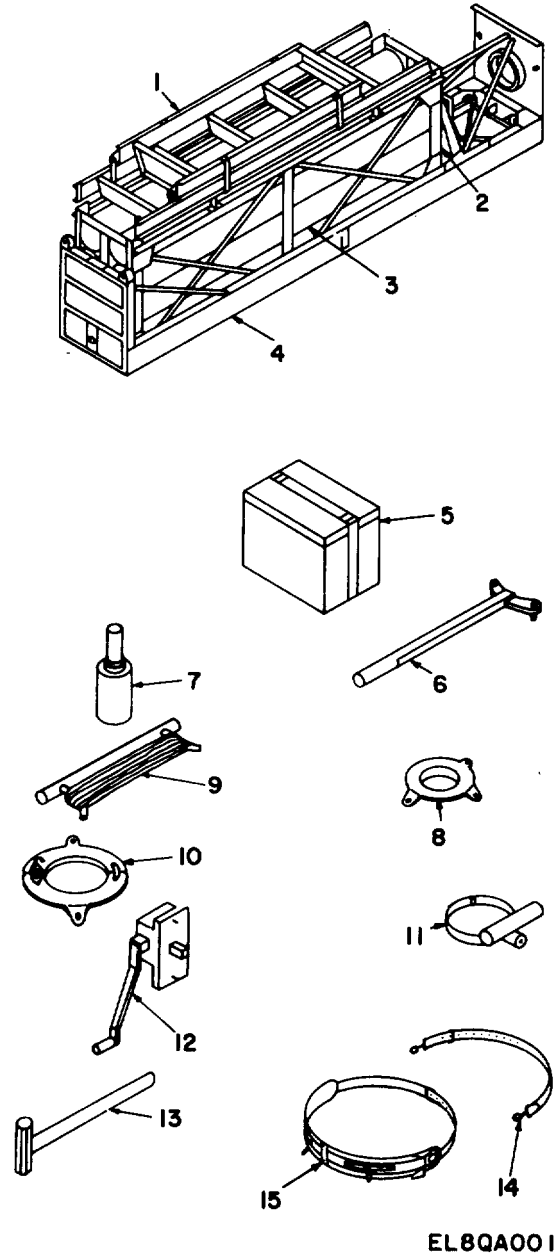
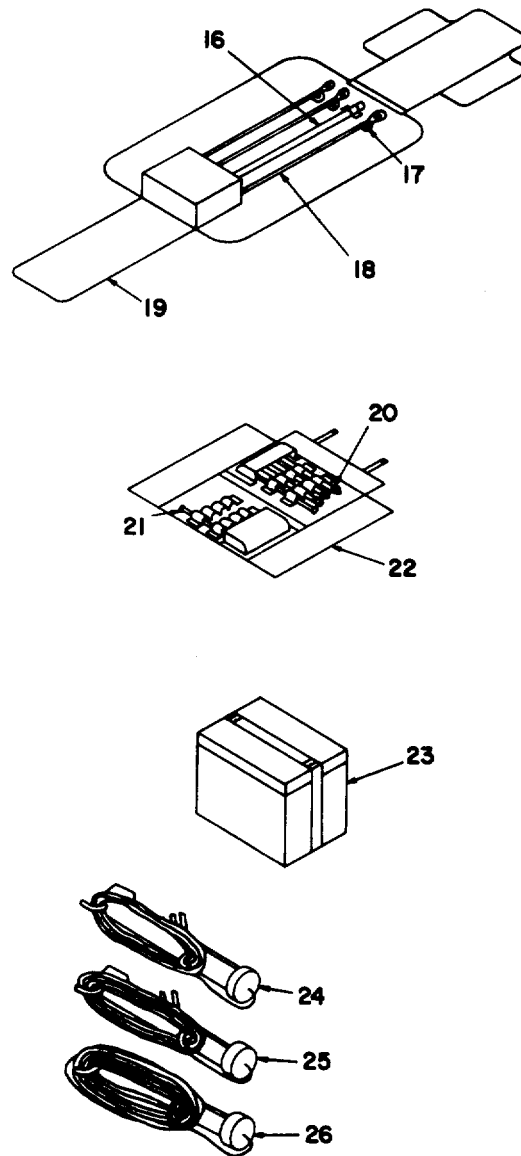


Figure 1. Mast , Antenna AB-621A/G (Sheet 1 of 2).



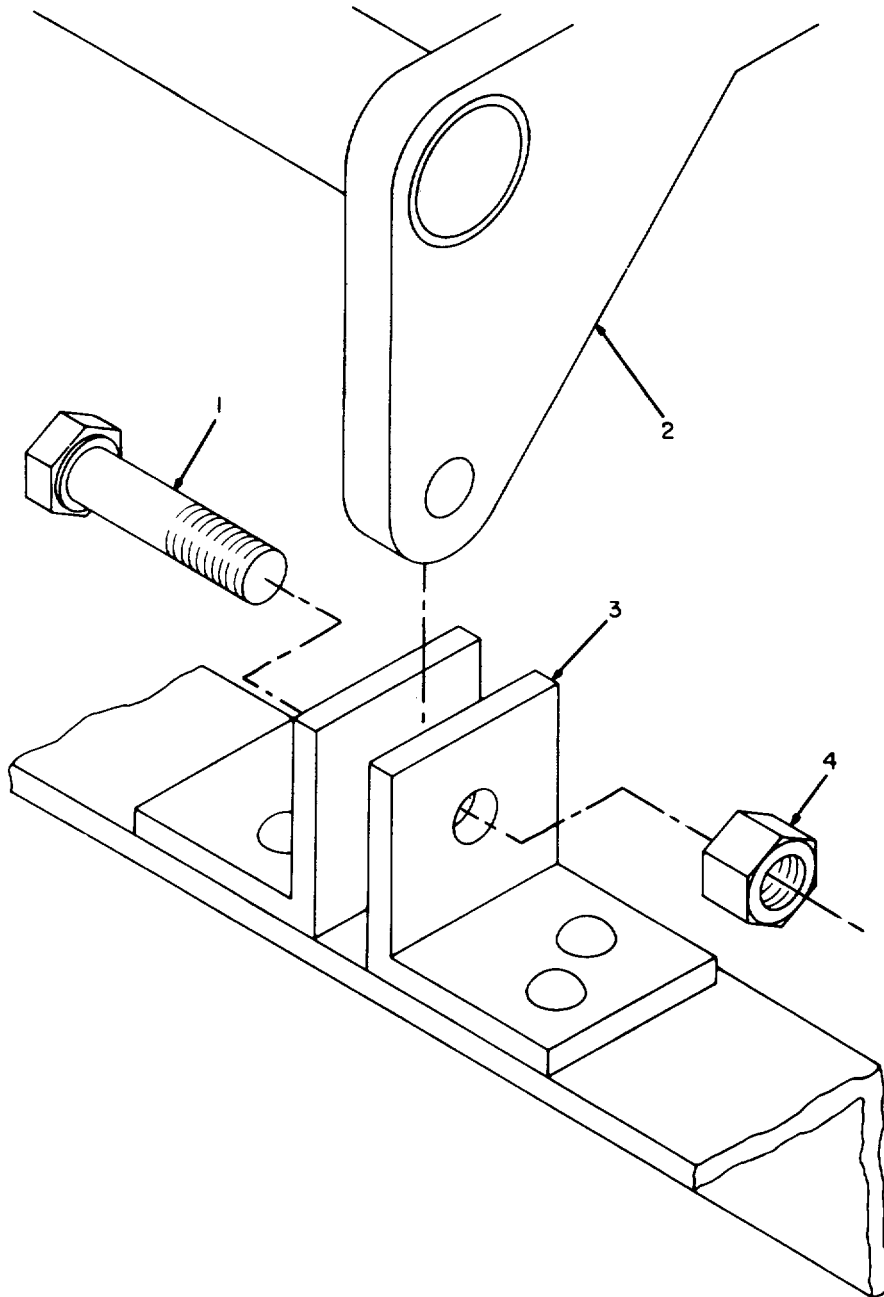
EL8QA002

Figure 1. Mast, Antenna AB-621A/G (Sheet 2 of 2)

SECTION II

TM 11-5985-334-34P-1

(1) ILLUSTRATION		(2)	(3)	(4)	(5)	(6)	(7)	(8)
(a) FIG NO.	(b) ITEM NO.	SMR CODE	NATIONAL STOCK NUMBER	FSCM	PART NUMBER	DESCRIPTION USABLE ON CODE	U/M	QTY INC IN UNIT
						GROUP 00 MAST ANTENNA AB-621A/G		
1	1	PDOFF		80063	SM-D-983106	LADDER ASSEMBLY ENR	EA	1
1	2	PAOFF	5985-00-244-1693	80063	SM-D-561881	CASE, MAST ENR	EA	1
1	3	PAOZZ	5985-00-242-4286	80063	SM-D-561875	MAST SECTION ENR	EA	8
1	4	PBOFH		80063	SM-D-983101	LAUNCHER ASSEMBLY ENR	EA	1
1	5	PDOZZ	5985-01-124-8753	80063	SM-C-983104	ACCESSORY SAG ENR	EA	1
1	6	PAOZZ	5120-00-169-2664	80063	SM-D-561899	WRENCH, SPANNER ENR	EA	1
1	7	PAOZZ	5985-00-237-0728	80063	SM-D-561874	MAST CAP ENR	EA	1
1	8	PAOZZ		80063	A3002091	GUY RING ASSEMBLY ENR	EA	1
1	9	PAOZZ		80063	A3002056	RADIUS ROPE ASSY ENR	EA	1
1	10	PAOZZ		80063	A3002088	GUY RING ASSEMBLY ENR	EA	1
1	11	AFOFZ		80063	SM-C-561864	PEEP SIGHT ASSEMBLY ENR	EA	1
1	12	PAOFF		80063	SM-D-983111	WINCH ASSEMBLY ENR	EA	1
1	13	PAOZZ		81348	GGG-H-86-2.5LB	HAMMER, HAND ENR	EA	1
1	14	PAOZZ		81348	KK-B-151STRAP	STRAP, SAFETY ENR	EA	1
1	15	PAOZZ		81348	KK-B-151BELT	BELT, SAFETY ENR	EA	1
1	16	PAOZZ	5120-00-892-4713	80063	SM-8-423624	BAR, DIGGING ENR	EA	1
1	17	PAOZZ		82241	A3002127	EYE, AUXILIARY ENR	EA	3
1	18	PAOZZ		73569	SP0-851	SCREW ANCHOR ENR	EA	3
1	19	PAOZZ		80063	A3002102	ANCHOR ROLL ENR	EA	1
1	20	PAOZZ	4030-00-291-9354	80058	GP-112/G	STAKE GP-12 ENR	EA	3
1	21	PAOZZ	4030-00-187-5261	80058	GP-2	STAKE, GUY ENR	EA	2
1	22	PDOZZ		80063	SM-D-983105	STAKE, BAG ENR	EA	1
1	23	PDOZZ	5985-01-124-8752	80063	SM-C-983103-1	GUY BAG ENR	EA	1
1	24	PAOZZ		80063	A3002077GR1	GUY ASSEMBLY, LOWER ENR	EA	3
1	25	PAOZZ		80063	A3002077GR2	GUY ASSEMBLY MID ENR	EA	3
1	26	PAOZZ		80063	A3002077GR3	GUY ASSEMBLY UPPER ENR	EA	3



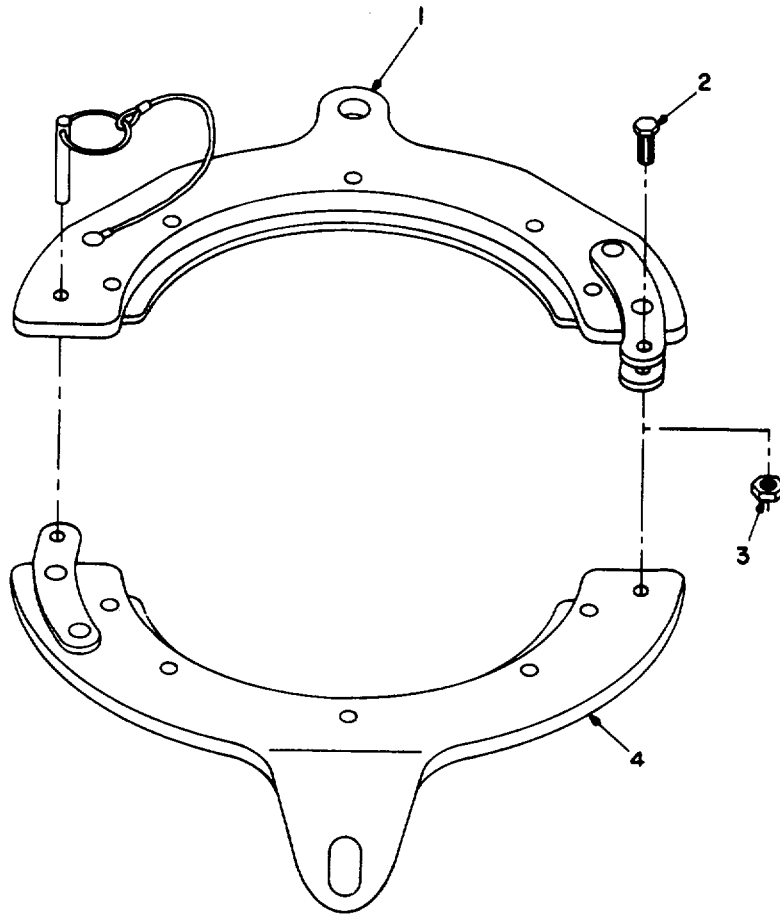
EL8QA003

Figure 2. Carrier Assembly SM-D-561881.

SECTION II

TM 11-5985-334-34P-1

(1) ILLUSTRATION		(2)	(3)	(4)	(5)	(6)	(7)	(8)
(a) FIG NO.	(b) ITEM NO.	SMR CODE	NATIONAL STOCK NUMBER	FSCM	PART NUMBER	DESCRIPTION USABLE ON CODE	U/M	QTY INC IN UNIT
						CARRIER ASSEMBLY		
2	1	PAFZZ	5306-00-582-9588	88044	AN6C13A	BOLT, MACHINE ENR	EA	2
2	2	XDFZZ		80063	SM-D-561883	HANDLE, CARRYING CS..... ENR	EA	1
2	3	XDFZZ		80063	SM-E-561882	FRAME, CARRYING CASE..... ENR	EA	1
2	4	PAFZZ	5310-00-059-9264	96906	MS21045C6	NUT, SELF-LOCKING, HE ENR	EA	2
7								



EL8QA004

Figure 3. Guy Ring, Middle A3002088.

SECTION II

TM 11-5985-334-34P-1

(1) ILLUSTRATION		(2)	(3)	(4)	(5)	(6)	(7)	(8)
(a) FIG NO.	(b) ITEM NO.	SMR CODE	NATIONAL STOCK NUMBER	FSCM	PART NUMBER	DESCRIPTION USABLE ON CODE	U/M	QTY INC IN UNIT
3	1	XAFZZ				GUY RING, MIDDLE		
3	2	PAFZZ	5306-00-156-2339	80063	A3002089	PLATE ENR	EA	1
3	3	PAFZZ	5310-00-982-4988	88044	AN4C7A	BOLT, MACHINE ENR	EA	1
3	3	PAFZZ		96906	MS21045C4	NUT, SELF-LOCKING, HE ENR	EA	1
3	4	XAFZZ		80063	A3002090	PLATE ENR	EA	1
9								

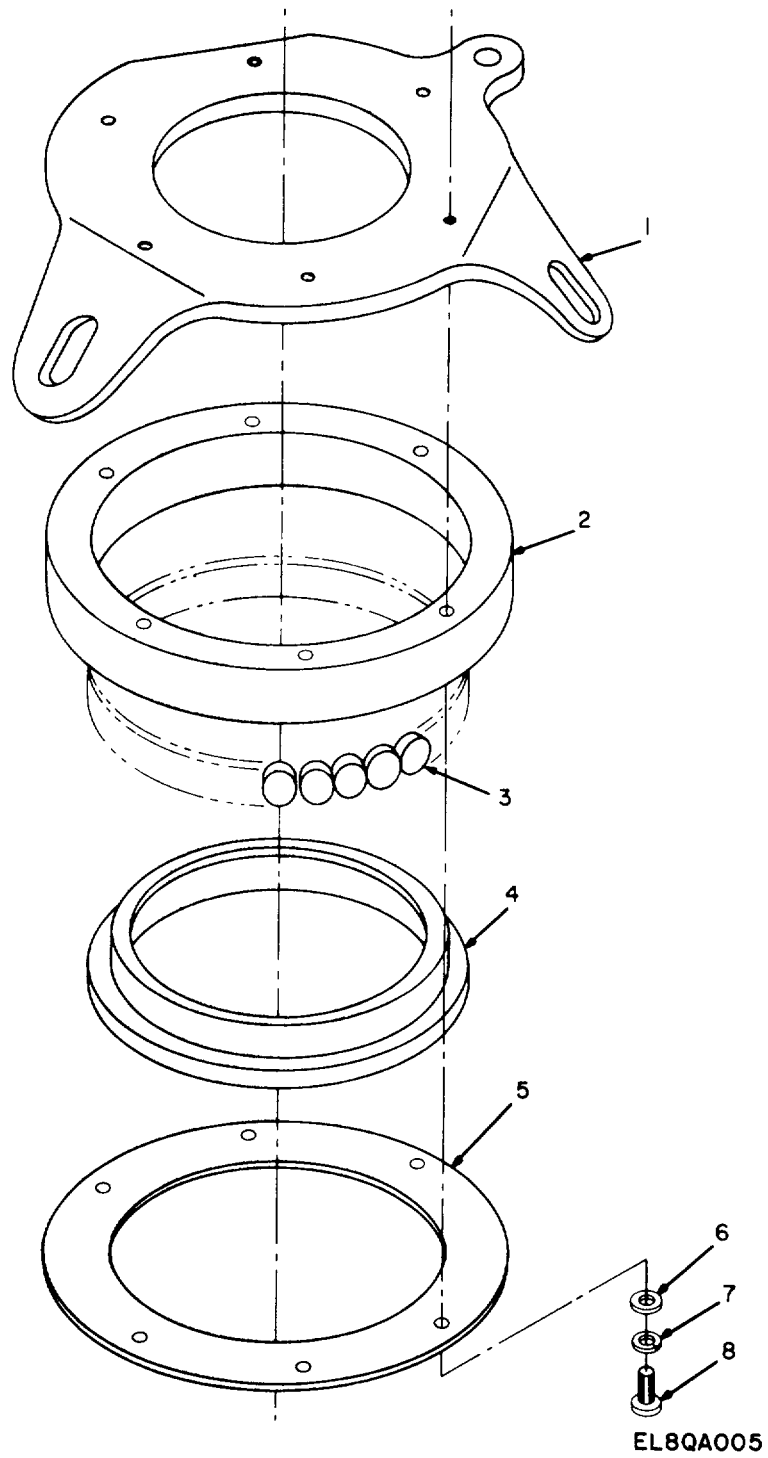
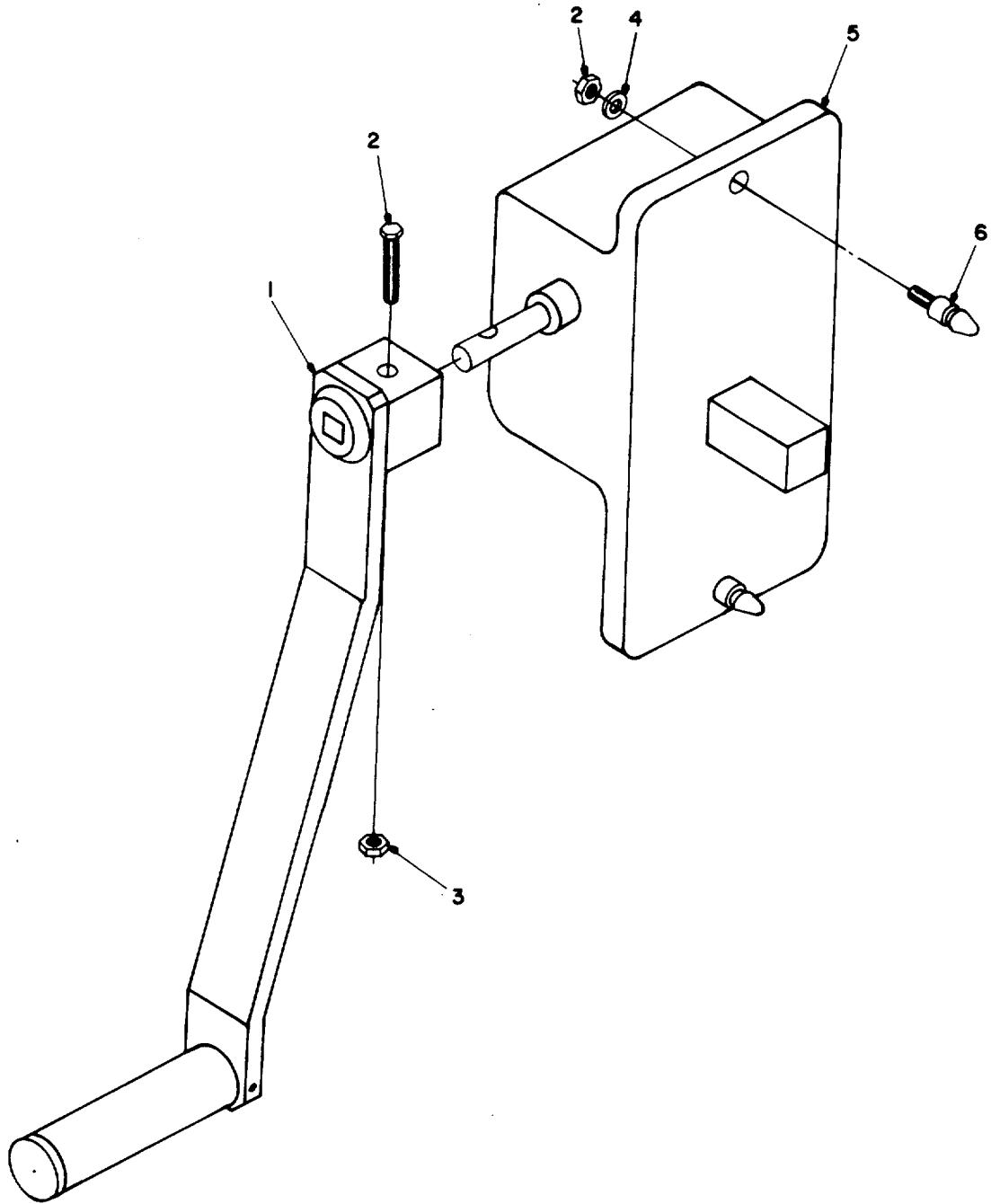


Figure 4. Guy Ring, Upper A3002091.

SECTION II

TM 11-5985-334-34P-1

(1) ILLUSTRATION		(2)	(3)	(4)	(5)	(6)	(7)	(8)
(a) FIG NO.	(b) ITEM NO.	SMR CODE	NATIONAL STOCK NUMBER	FSCM	PART NUMBER	DESCRIPTION USABLE ON CODE	U/M	QTY INC IN UNIT
						GUY RING ,UPPER		
4	1	XDFZZ		80063	A3002092	PLATE ASSEMBLY ENR	EA	1
4	2	XDFZZ		80063	SM-B-561873	CASTING, .GUY RING UPR..... ENR	EA	1
4	3	XDFZZ		80063	SM-B-561924	BRG, GUY RING UPR..... ENR	EA	25
4	4	XDFZZ		80063	SM-B-561871	RACE, GUY RING UPPER..... ENR	EA	1
4	5	XDFZZ		80063	SM-B-561872	COVER, .GUY RING UPR..... ENR	EA	1
4	6	PAFZZ	5310-00-550-5054	96906	MS15795-809	WASHER, FLAT ENR	EA	6
4	7	PAFZZ		96906	MS35338-138	WASHER, LOCK ENR	EA	6
4	8	PAFZZ	5305-00-050-9234	96906	MS51957-68	SCREW, MACHINE ENR	EA	6



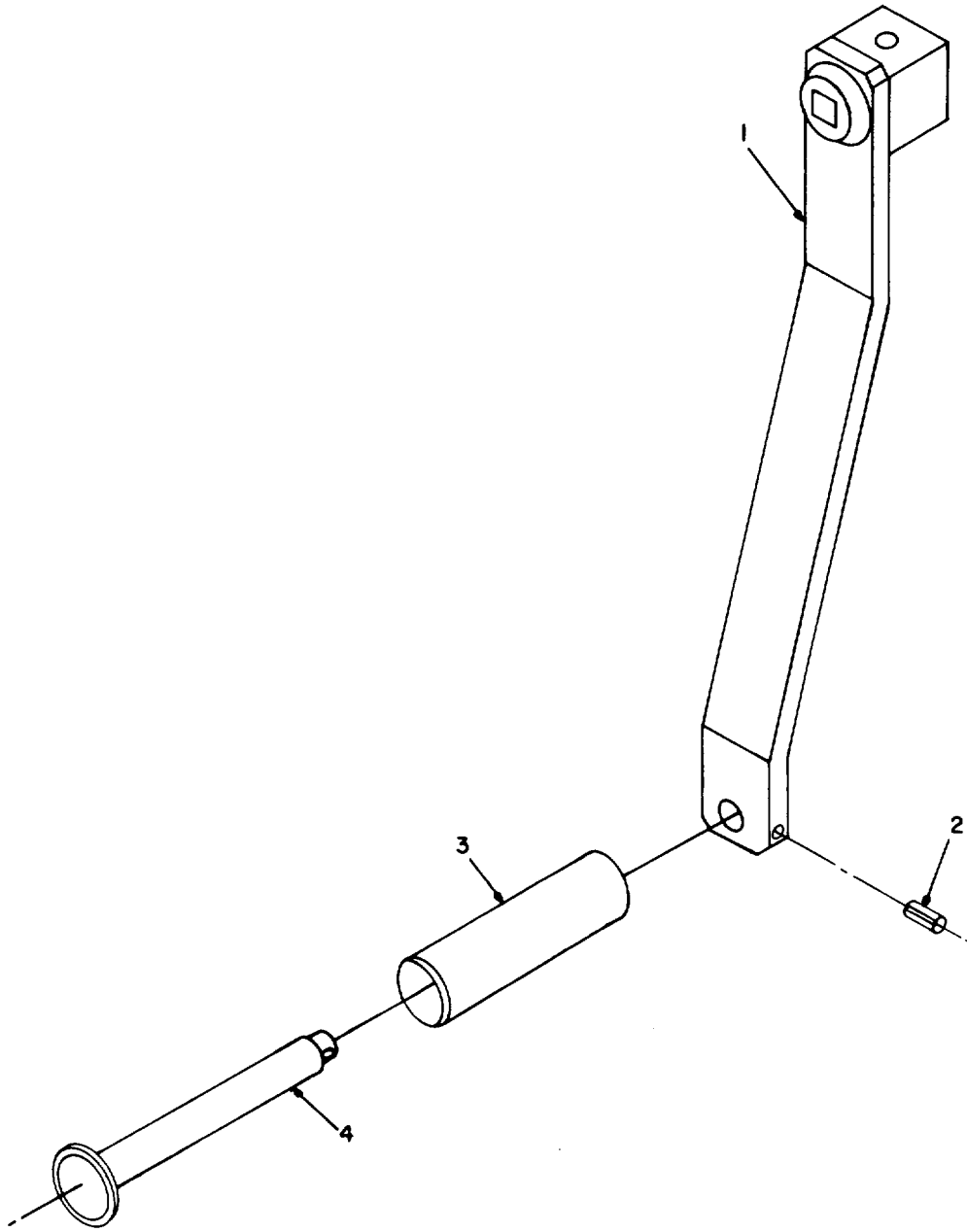
EL8QA006

Figure 5. Winch Assembly SM-D-983111.

SECTION II

TM 11-5985-334-34P-1

(1) ILLUSTRATION		(2)	(3)	(4)	(5)	(6)	(7)	(8)
(a) FIG NO.	(b) ITEM NO.	SMR CODE	NATIONAL STOCK NUMBER	FSCM	PART NUMBER	DESCRIPTION USABLE ON CODE	U/M	QTY INC IN UNIT
						WINCH ASSEMBLY		
5	1	PAFZZ	3950-00-954-0526	80063	SM-C-423574	HANDLE ASSEMBLY, WIN ENR	EA	1
5	2	PAFZZ	5306-00-156-2333	88044	AN3C14A	BOLT, MACH..... ENR	EA	11
5	3	PAFZZ	5310-00-263-2862	96906	MS21045C3	NUT, SELF-LOCKING, HE ENR	EA	3
5	4	PAFZZ	5310-00-167-0812	88044	AN960C10L	WASHER, FLAT ENR	EA	2
5	5	XDFZZ		80063	SM-C-983110	WINCH ENR	EA	1
5	6	PAFZZ		80063	SM-8-561879-1	STUD WINCH..... ENR	EA	2



EL8QA007

Figure 6. Crank, Hand Assembly SM-C-423574.

SECTION II

TM 11-5985-334-34P-1

(1) ILLUSTRATION		(2)	(3)	(4)	(5)	(6)	(7)	(8)
(a) FIG NO.	(b) ITEM NO.	SMR CODE	NATIONAL STOCK NUMBER	FSCM	PART NUMBER	DESCRIPTION USABLE ON CODE	U/M	QTY INC IN UNIT
6	1	XDFZZ	5315-00-753-3893	80063	SM-B-540138	CRANK, HAND ASSEMBLY		
6	2	PAFZZ		96906	MS16562-226	HANDLE ASSEMBLY ENR	EA	1
6	3	XDFZZ		80063	SM-B-540128	PIN, SPRING ENR	EA	1
6	4	XDFZZ		80063	SM-B-540127	TUBE ENR	EA	1
						ROD..... ENR	EA	1

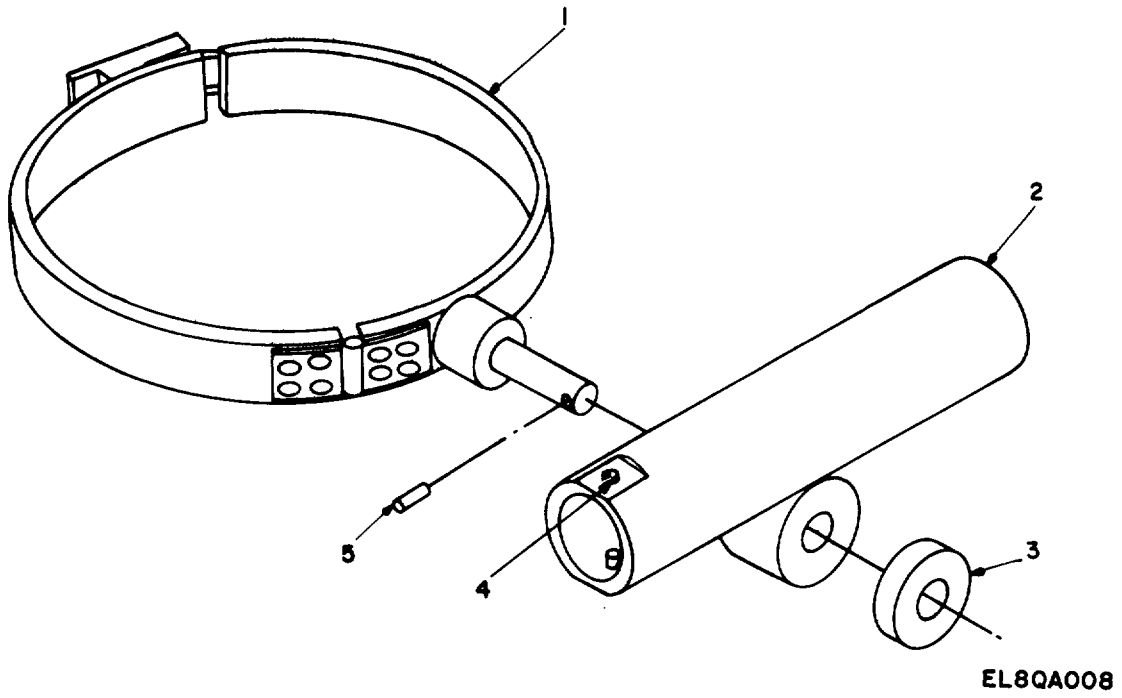
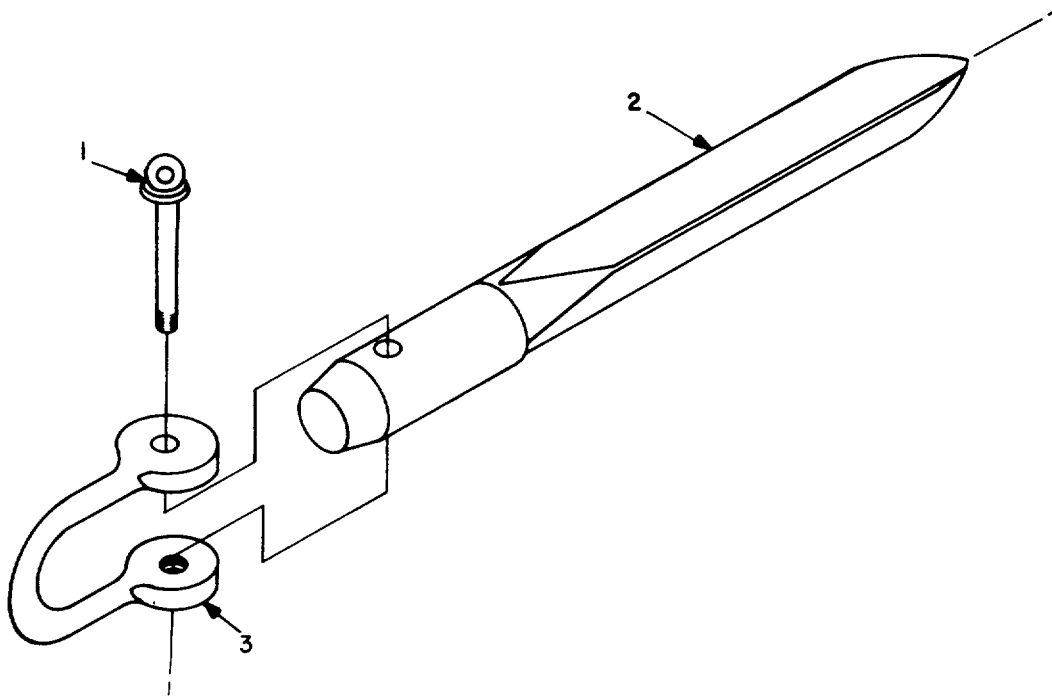


Figure 7. Peepsight Assembly SM-C-561864.

SECTION II

TM 11-5985-334-34P-1

(1) ILLUSTRATION		(2)	(3)	(4)	(5)	(6)	(7)	(8)
(a) FIG NO.	(b) ITEM NO.	SMR CODE	NATIONAL STOCK NUMBER	FSCM	PART NUMBER	DESCRIPTION USABLE ON CODE	U/M	QTY INC IN UNIT
						PEEPSIGHT ASSEMBLY		
7	1	PAFZZ		80063	SM-D-561866	MOUNT, .PEEPSIGHT ENR	EA	1
7	2	PAFZZ		80063	SM-C-561865	PEEPSIGHT ASSEML..... ENR	EA	1
7	3	PAHZZ		80063	SM-B-561867-1	NUT, KNURLED ENR	EA	1
7	4	PAFZZ	5305-00-054-6650	96906	MS51957-26	SCREWS, MACHINE ENR	EA	2
7	5	PAHZZ		96906	MS35678-4	PIN GROOVE ENR	EA	1



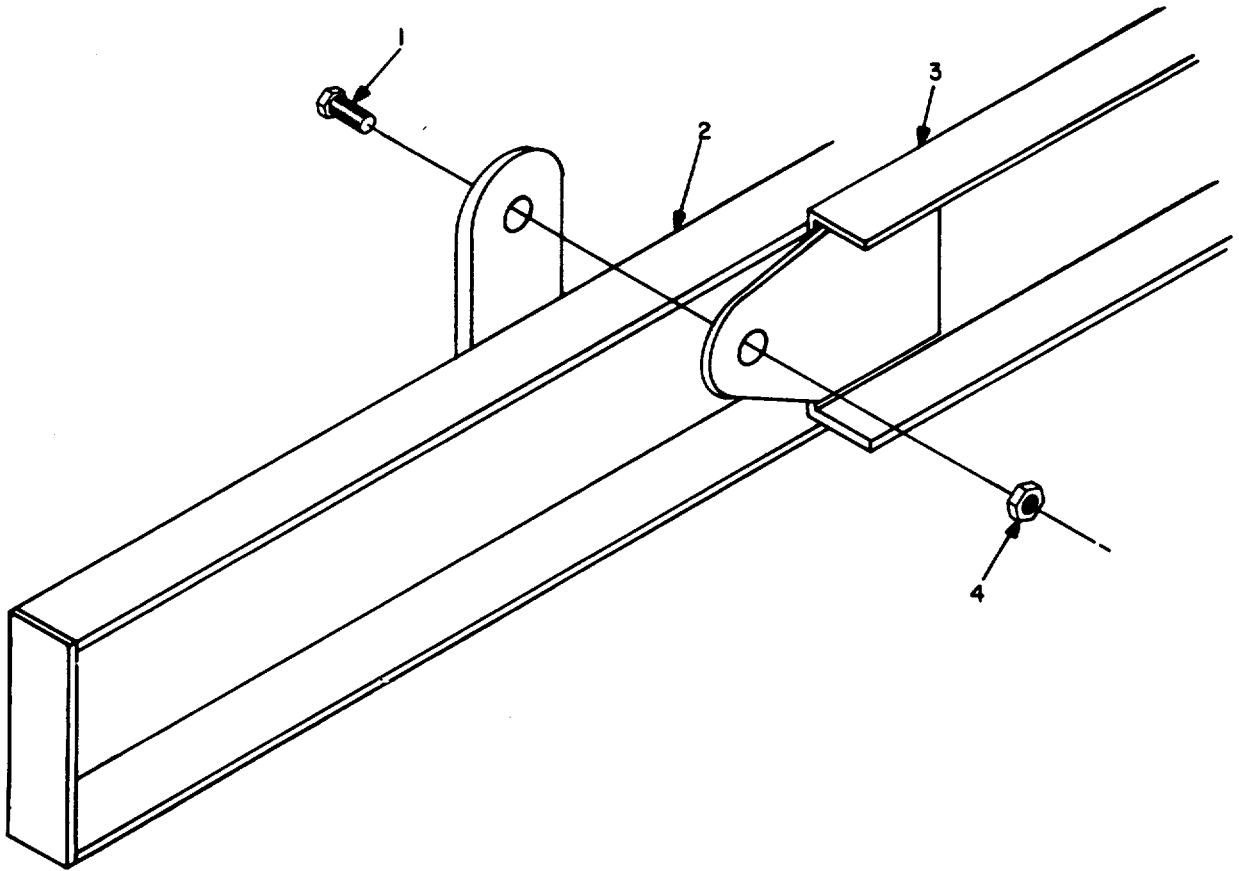
EL8QA009

Figure 8. Stake GP-112, SC-D-99878.

SECTION II

TM 11-5985-334-34P-1

(1) ILLUSTRATION		(2)	(3)	(4)	(5)	(6)	(7)	(8)
(a) FIG NO.	(b) ITEM NO.	SMR CODE	NATIONAL STOCK NUMBER	FSCM	PART NUMBER	DESCRIPTION USABLE ON CODE	U/M	QTY INC IN UNIT
						STAKE GP-112		
8	1	XDFZZ	5306-00-405-4588	80063	SC-B-99880	BOLT, EYE ENR	EA	1
8	2	XDFZZ		80063	SC-C-99879	STAKE ENR	EA	1
8	3	XDFZZ	4030-00-159-7127	80063	SC-C-99881	SHACKLE ENR	EA	1



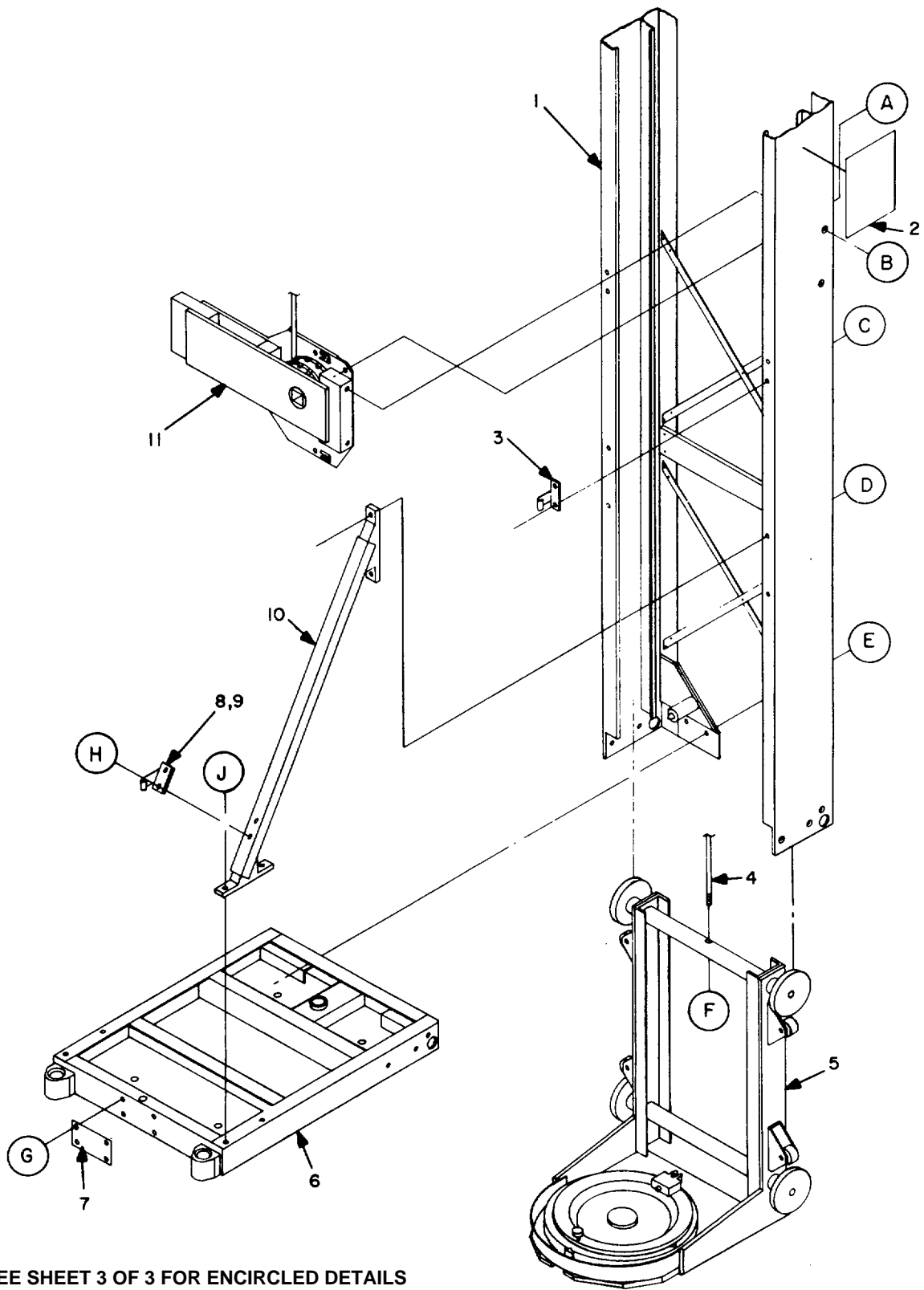
EL8QA010

Figure 9. Ladder Assembly SM-D-983106.

SECTION II

TM 11-5985-334-34P-1

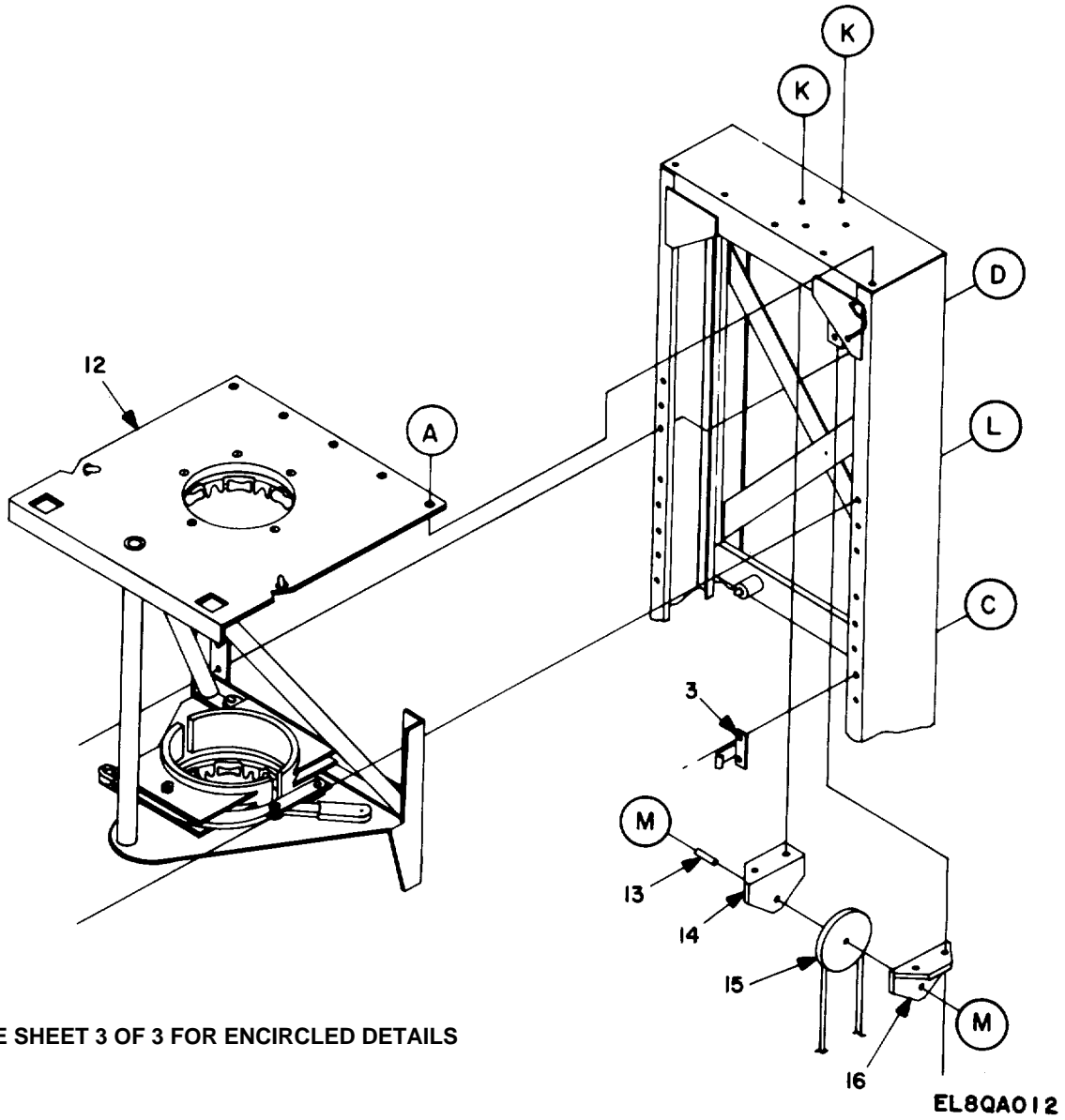
(1) ILLUSTRATION		(2)	(3)	(4)	(5)	(6)	(7)	(8)
(a) FIG NO.	(b) ITEM NO.	SMR CODE	NATIONAL STOCK NUMBER	FSCM	PART NUMBER	DESCRIPTION USABLE ON CODE	U/M	QTY INC IN UNIT
						LADDER ASSEMBLY		
9	1	XDFZZ		80063	A3002012	BOLT ENR	EA	2
9	2	XDFZZ		80063	A3002075	LADDER, LOWER ENR	EA	1
9	3	XDFZZ		80063	A3002074	LADDER, UPPER ENR	EA	1
9	4	PAFZZ		96906	MS51922-22	NUT, SELF-LOCK HEX ENR	EA	2



SEE SHEET 3 OF 3 FOR ENCIRCLED DETAILS

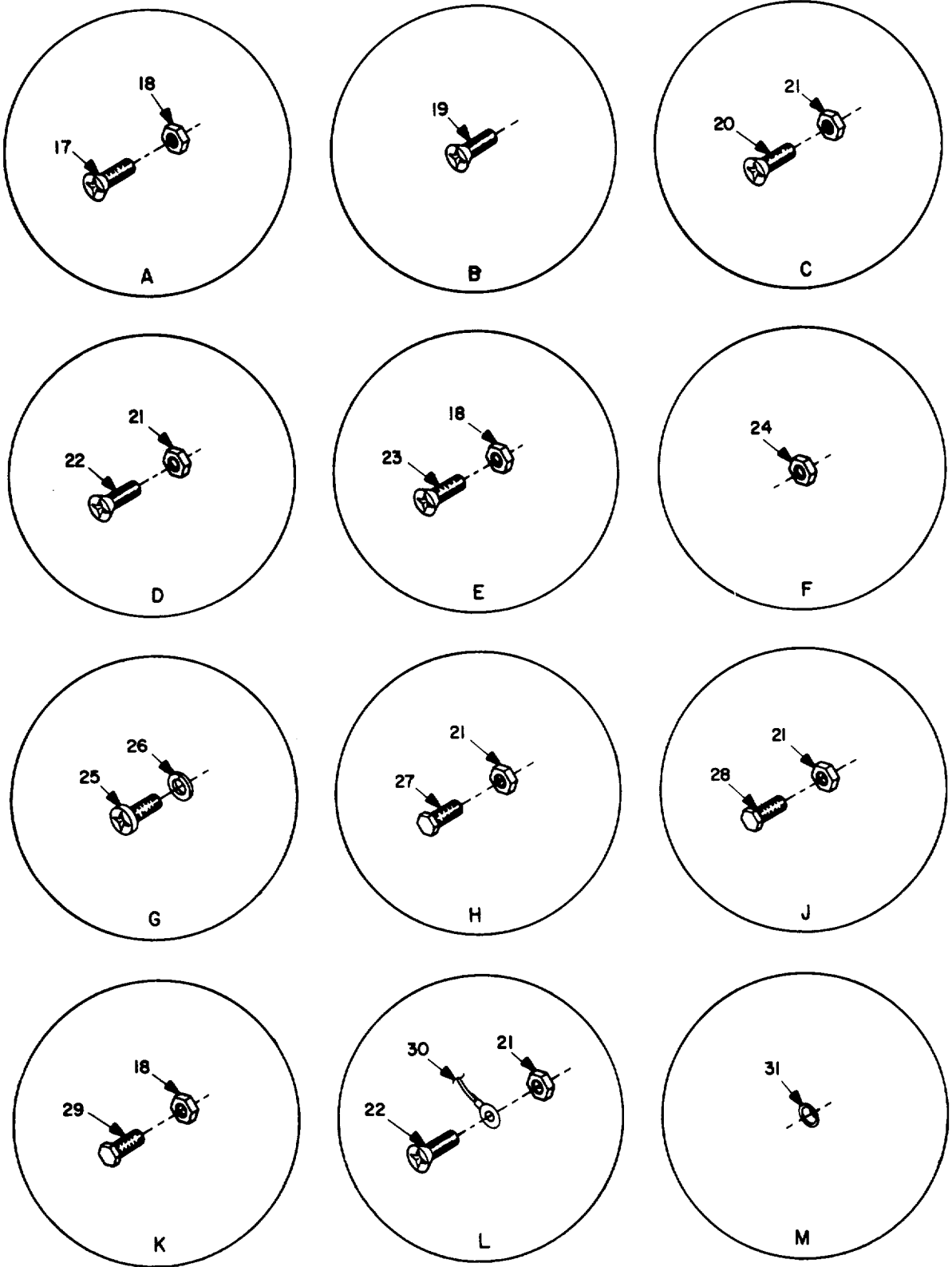
EL8QA011

Figure 10. Launcher SM-D-983101 (Sheet 1 of 3).



SEE SHEET 3 OF 3 FOR ENCIRCLED DETAILS

Figure 10. Launcher SM-D-983101 (Sheet 2 of 3).



EL8QA013

Figure 10. Launcher SM-D-983101 (Sheet 3 of 3).

SECTION II

TM 11-5985-334-34P-1

(1) ILLUSTRATION		(2)	(3)	(4)	(5)	(6)	(7)	(8)
(a) FIG NO.	(b) ITEM NO.	SMR CODE	NATIONAL STOCK NUMBER	FSCM	PART NUMBER	DESCRIPTION USABLE ON CODE	U/M	QTY INC IN UNIT
						GROUP 01 LAUNCHER		
10	1	XDFZZ		80063	SM-D-983114	FRAME, LAUNCHER ASSY ENR	EA	1
10	2	XDFZZ		80063	A3002024	PLATE, CAUTION ENR	EA	1
10	3	XDFZZ		80063	A3002019	STRIKE-CATCH ENR	EA	4
10	4	XDFZZ	5975-01-012-5445	80063	SM-B-561855	GUY..... ENR	EA	1
10	5	XDFFF		80063	SM-D-983113	ELEVATOR ASSEMBLY ENR	EA	1
10	6	XDFZZ		80063	SM-D-561805	BASE ASSEMBLY ENR	EA	1
10	7	XDFZZ		80063	SM-B-983102	PLATE, IDENT..... ENR	EA	1
10	8	XDFZZ		80063	A3002018-1	STRIKE-CATCH ENR	EA	1
10	9	XDFZZ		80063	A3002018-2	STRIKE-CATCH ENR	EA	1
10	10	XDFZZ		80063	SM-D-561846	BRACE ASSEMBLY ENR	EA	2
10	11	XDFFF	5985-01-124-5431	80063	A3002068	REEL ASSEMBLY ENR	EA	1
10	12	XDFFF		80063	SM-C-983115	GUIDE ASSY..... ENR	EA	1
10	13	PAFZZ		80063	A3002011	SHAFT, PULLEY BRKT ENR	EA	5
10	14	XDFZZ		80063	A3002015-1	PULLEY BRACKET ENR	EA	1
10	15	XDFZZ		80063	SM-B-561856	PULLEY ASSEMBLY ENR	EA	1
10	16	XDFZZ		80063	A3002015-2	BRACKET, PULLEY ENR	EA	1
10	17	PAFZZ		88044	AN509C416R14	SCREW, MACHINE ENR	EA	7
10	18	PAFZZ	5310-00-982-4988	96906	MS21045C4	NUT, SELF-LOCKING, HE ENR	EA	23
10	19	PAFZZ		88044	AN507C428R12	SCREW, MACHINE ENR	EA	4
10	20	PAFZZ	5305-00-824-2029	96906	MS24694C56	SCREW, MACHINE ENR	EA	8
10	21	PAFZZ	5310-00-263-2862	96906	MS21045C3	NUT SELF-LOCKING, HE ENR	EA	32
10	22	PAFZZ		88044	AN509C10R10	SCREW, MACHINE ENR	EA	16
10	23	PAFZZ	5305-00-207-2793	88044	AN509C416R11	SCREW, MACHINE ENR	EA	12
10	24	PAFZZ	5310-00-823-8835	96906	MS21045C5	NUT, SELF-LOCKING , HE ENR	EA	1
10	25	PAFZZ	5305-00-054-5646	96906	MS51957-12	SCREW MACHINE ENR	EA	4
10	26	PAFZZ	5310-00-933-8118	96906	MS35338-135	WASHER, .LOCK ENR	EA	4
10	27	PAFZZ		88044	AN3C17A	BOLT, MACHINE ENR	EA	4
10	28	PAFZZ	5306-00-150-9527	88044	AN3C5A	BOLT, .MACHINE ENR	EA	4
10	29	PAFZZ	5306-00-156-2339	88044	AN4C7A	BOLT, MACHINE ENR	EA	4
10	30	XDFZZ		80063	SM-B-561892GR3	CABLE ASSEMBLY..... ENR	EA	1
10	31	XDFZZ	5365-00-282-7120	96906	MS16624-4037	RING, RETAINING ENR	EA	2

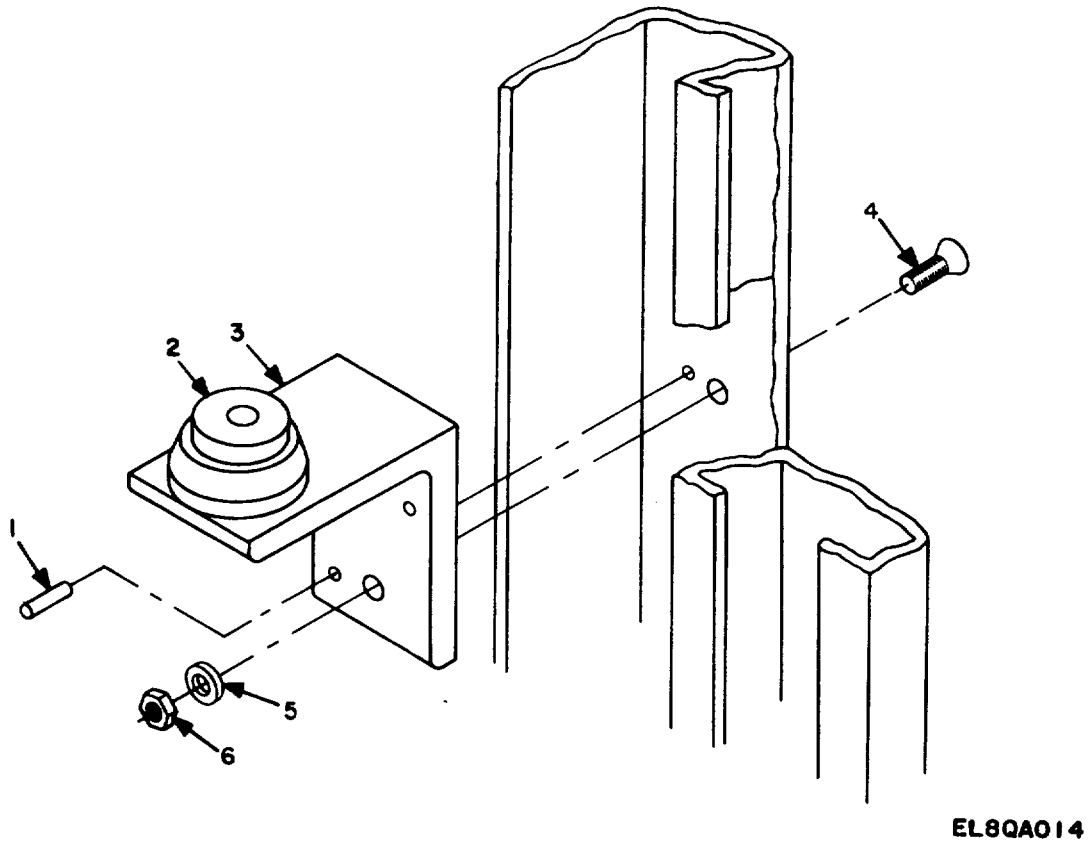
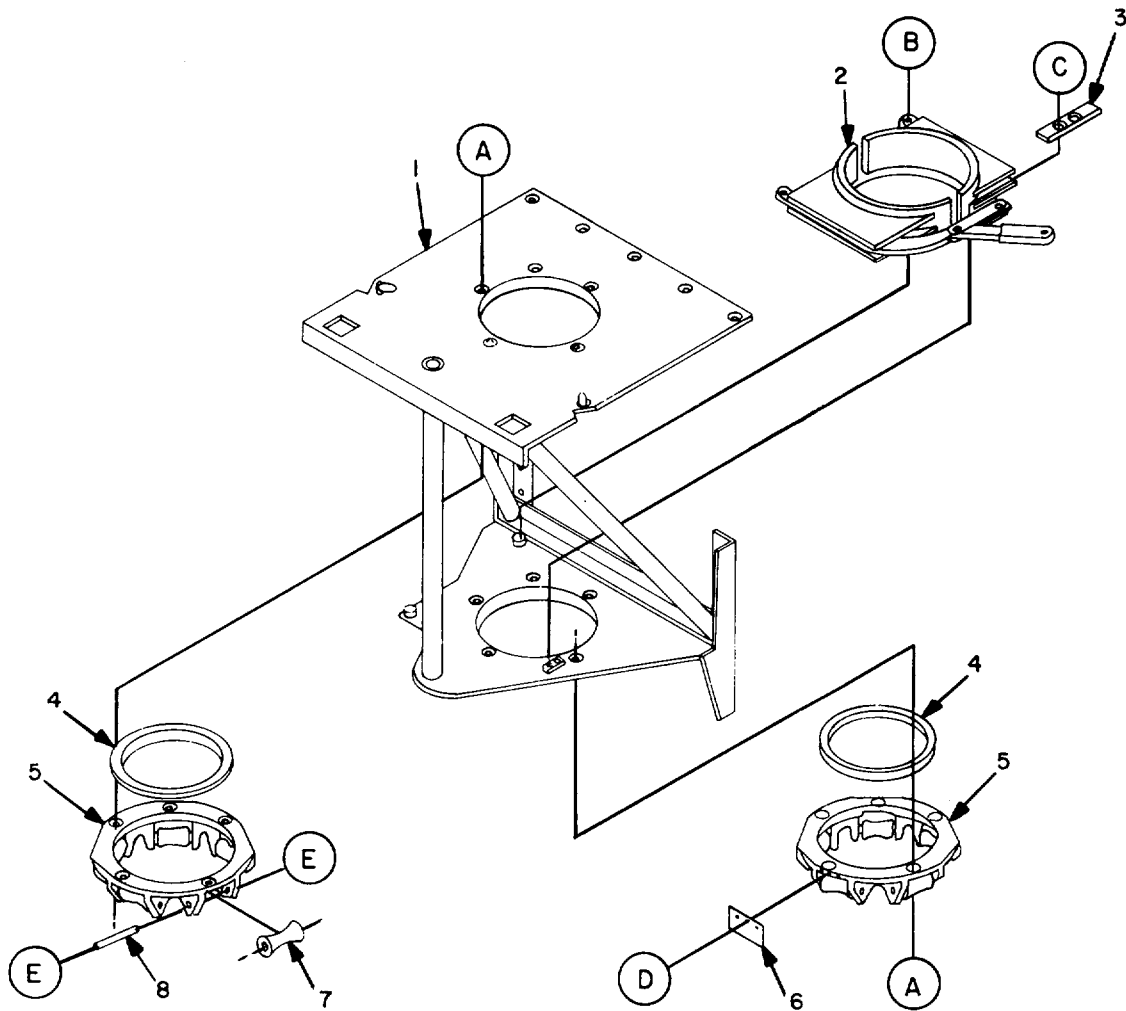


Figure 11. Level, Mast Assembly SM-C-781276.

SECTION II

TM 11-5985-334-34P-1

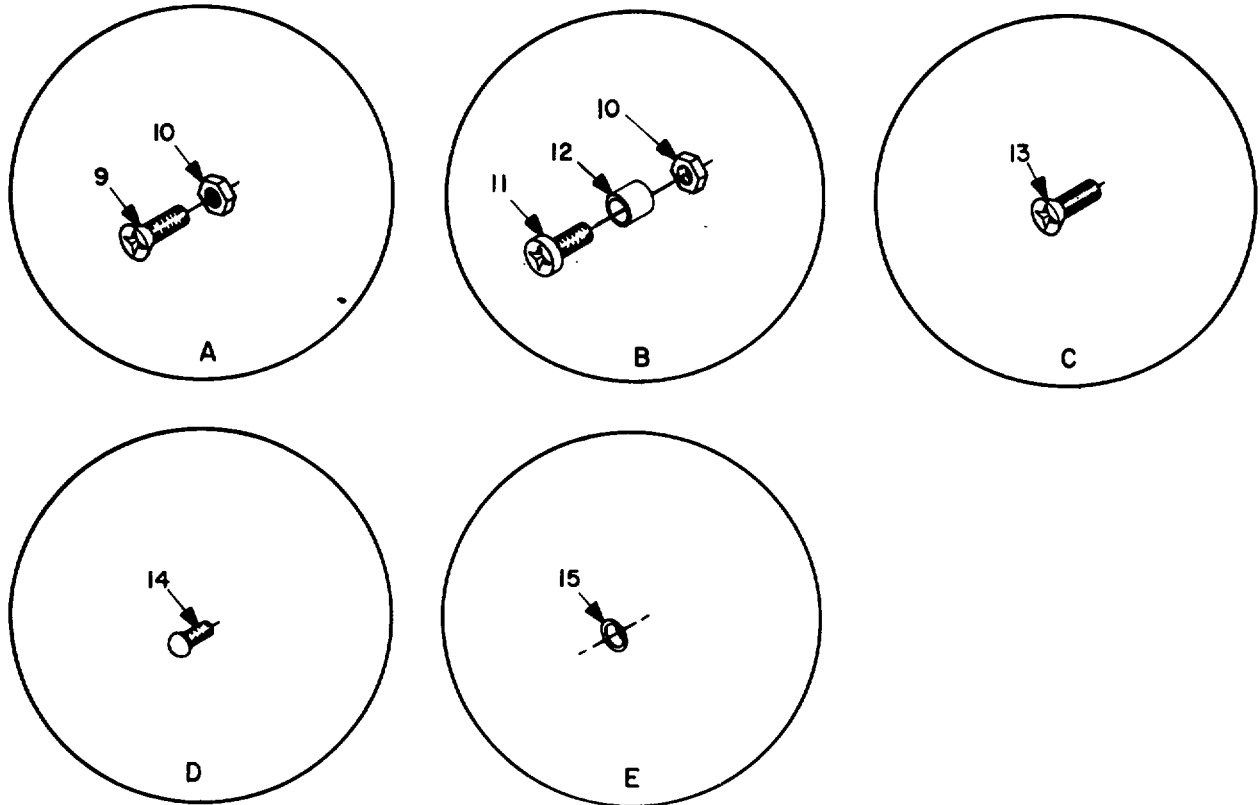
(1) ILLUSTRATION		(2)	(3)	(4)	(5)	(6)	(7)	(8)
(a) FIG NO.	(b) ITEM NO.	SMR CODE	NATIONAL STOCK NUMBER	FSCM	PART NUMBER	DESCRIPTION USABLE ON CODE	U/M	QTY INC IN UNIT
						LEVEL, MAST ASSEMBLY		
11	1	PAFZZ	5315-00-840-0906	96906	MS16562-210	PIN, SPRING ENR	EA	2
11	2	XAFZZ		80063	SM-C-728942	LEVEL ENR	EA	1
11	3	XAFZZ		80063	SM-B-423625	ANGLE MOUNTING LVL ENR	EA	1
11	4	PAFZZ		96906	MS24694C54	SCREW, MACHINE ENR	EA	2
11	5	PAFZZ	5310-00-167-0812	88044	AN960C10L	WASHER, FLAT ENR	EA	2
11	6	PAFZZ	5310-00-059-9263	96906	MS21046C3	NUT, SELF-LOCKING, HE ENR	EA	2



SEE SHEET 2 OF 2 FOR ENCIRCLED DETAILS

EL8QA015

Figure 12. Guide Assembly SM-C-983115 (Sheet 1 of 2).



EL8QA016

Figure 12. Guide Assembly SM-C-983115 (Sheet 2 of 2)

(1) ILLUSTRATION		(2)	(3)	(4)	(5)	(6)	(7)	(8)
(a) FIG NO.	(b) ITEM NO.	SMR CODE	NATIONAL STOCK NUMBER	FSCM	PART NUMBER	DESCRIPTION USABLE ON CODE	U/M	QTY INC IN UNIT
						GUIDE ASSEMBLY		
12	1	XDFZZ		80063	SM-D-983112	GUIDE PLATE ASSY ENR	EA	1
12	2	PAFFF		80063	SM-C-983107	BRAKE ASSEMBLY ENR	EA	1
12	3	XDFZZ		80063	SM-B-561822-1	RETAINER, BRAKE ENR	EA	1
12	4	XDFZZ		80063	SM-C-561918-1	RING, GUIDE ENR	EA	1
12	5	PAFZZ	5985-00-189-6629	80063	SM-D-561808	RING ASSEMBLY GUIDE ENR	EA	2
12	6	XDFZZ		80063	SM-B-561854-1	CAUTION PLATE ENR	EA	1
12	7	XDFZZ		80063	SM-B-561809-1	GUIDE ROLLER ENR	EA	10
12	8	XDFZZ		80063	SM-B-561810-1	SHAFT , ROLLER..... ENR	EA	10
12	9	PAFZZ		88044	AN509C616R17	SCREW, MACHINE..... ENR	EA	10
12	10	PAFZZ	5310-00-059-9264	96906	MS21045C6	NUT, SELF-LOCKING HE ENR	EA	12
12	11	PAFZZ	5306-00-582-9009	88044	AN6C17A	BOLT, MACHINE ENR	EA	2
12	12	XDFZZ		80063	SM-B-561821-1	SPACER..... ENR	EA	2
12	13	PAFZZ		88044	AN507C832R7	SCREW, MACHINE ENR	EA	2
12	14	XDFZZ		80063	SM-B-561917-1	SCREW, DRIVE ENR	EA	3
12	15	PAFZZ	5365-00-286-8718	96906	MS16633-4037	RING, RETAINING ENR	EA	20

SECTION II

TM 11-5985-334-34P-1

(1) ILLUSTRATION		(2)	(3)	(4)	(5)	(6)	(7)	(8)
(a) FIG NO.	(b) ITEM NO.	SMR CODE	NATIONAL STOCK NUMBER	FSCM	PART NUMBER	DESCRIPTION USABLE ON CODE	U/M	QTY INC IN UNIT
						BRAKE ASSEMBLY		
13	1	PAFZZ	5310-00-823-8835	96906	MS21045C5	NUT, SELF-LOCKING, HE ENR	EA	3
13	2	PAFZZ	5306-00-180-1921	88044	AN5C12A	BOLT, MACHINE ENR	EA	2
13	3	PAFZZ	5310-00-268-6025	88044	AN315C5R	NUT, PLAIN, HEXAGON ENR	EA	1
13	4	PAFZZ	5310-00-982-4988	96906	MS21045C4	NUT, SELF-LOCKING, HE ENR	EA	2
13	5	PAFZZ	5306-00-156-2344	88044	AN4C14A	BOLT, MACHINE ENR	EA	2
13	6	PAFZZ		80063	A3002053	SHOE ASSY, FRONT ENR	EA	1
13	7	PAFZZ		80063	A3002052	SHOE ASSY, REAR ENR	EA	1
13	8	XDFZZ		80063	SM-C-561816	LEVER ASSEMBLY, REAR ENR	EA	1
13	9	XDFZZ		80063	SM-B-561847	BOLT, EYE ENR	EA	1
13	10	XDFZZ		80063	SM-B-561818	LINK, BRAKE ENR	EA	2
13	11	XDFZZ		80063	SM-B-561819-1	HANDLE, BRAKE ENR	EA	1
13	12	XDFZZ	5315-00-801-4170	96906	MS35678-19	PIN, GROOVED ENR	EA	1
13	13	XDFZZ		80063	SM-B-561820-1	PIN, PIVOT ENR	EA	1
13	14	XDFZZ		80063	SM-C-561817-1	LEVER, FRONT ENR	EA	1

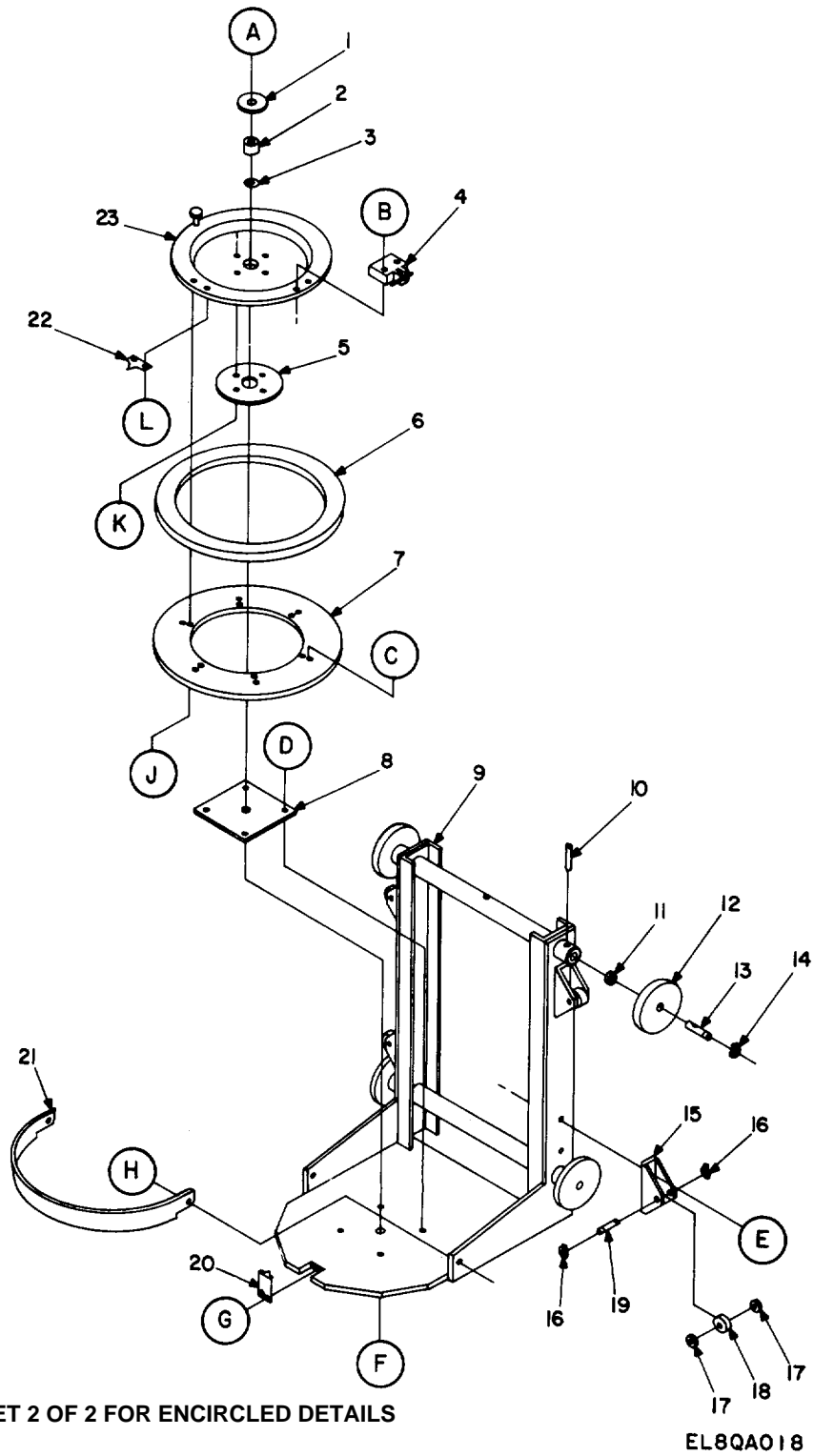
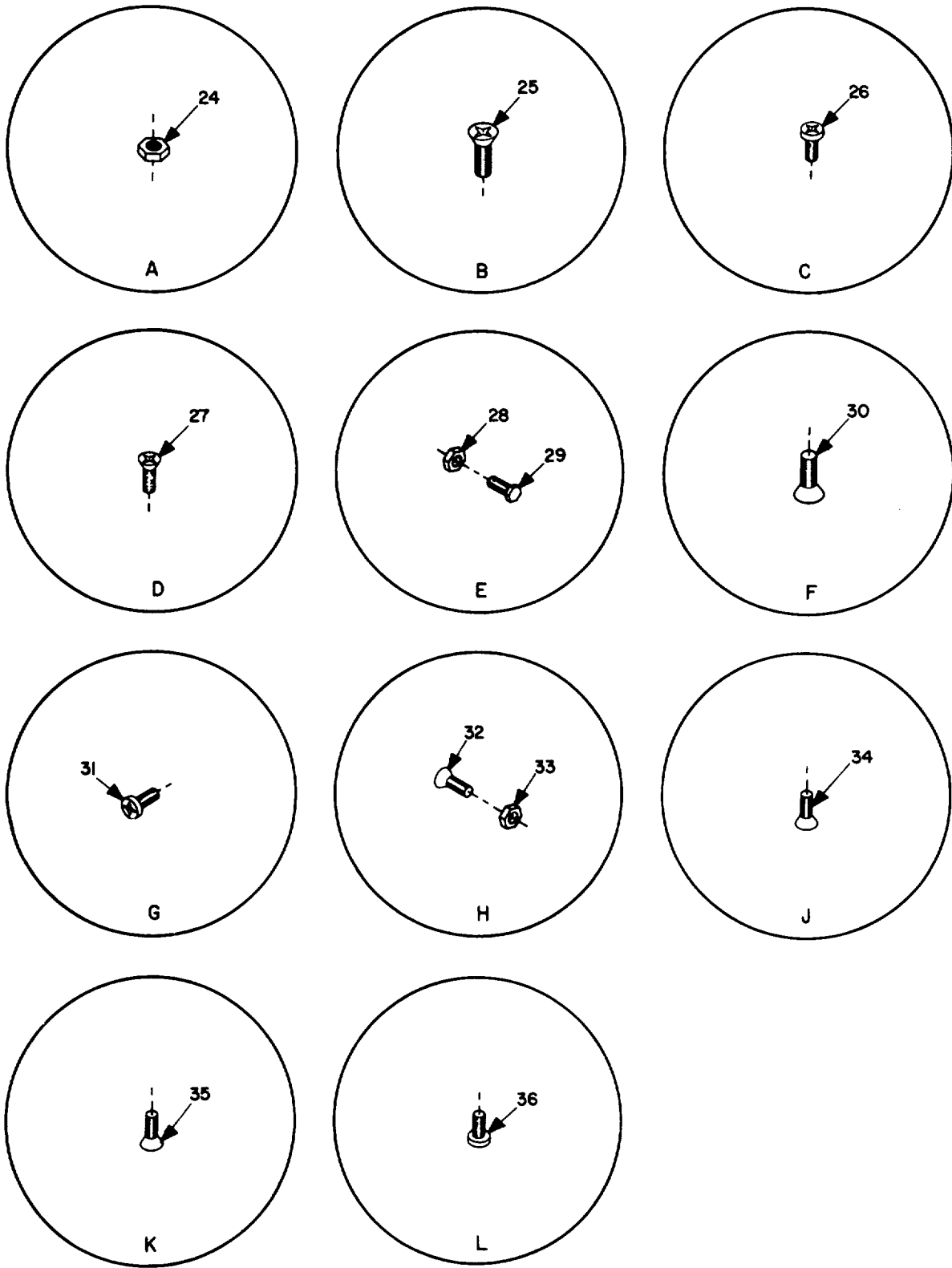


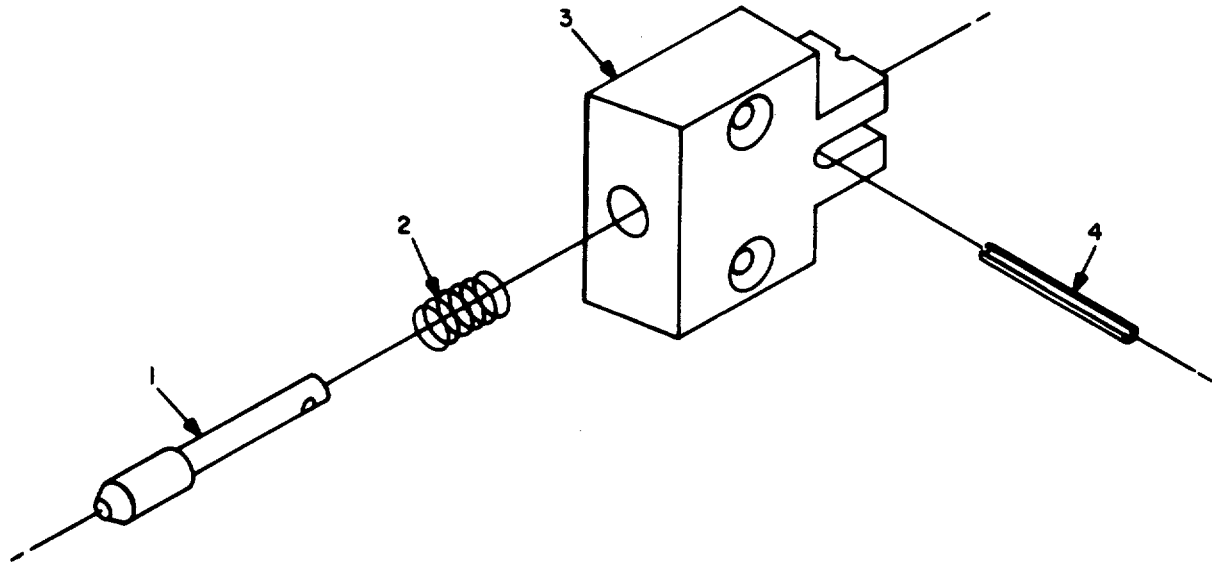
Figure 14. Elevator Assembly SM-D-983113 (Sheet 1 of 2).



EL8QA019

Figure 14. Elevator Assembly SM-D-983113 (Sheet 2 of 2).

(1) ILLUSTRATION		(2)	(3)	(4)	(5)	(6)	(7)	(8)
(a) FIG NO.	(b) ITEM NO.	SMR CODE	NATIONAL STOCK NUMBER	FSCM	PART NUMBER	DESCRIPTION USABLE ON CODE	U/M	QTY INC IN UNIT
						ELEVATOR ASSEMBLY		
14	1	XDFZZ		80063	SM-B-561916-1	WASHER, FLAT ENR	EA	1
14	2	XDFZZ		80063	SM-B-561834-1	SLEEVE ENR	EA	1
14	3	PAFZZ	5310-00-838-7285	96906	MS9549-12	WASHER, FLAT ENR	EA	1
14	4	XDFZZ		80063	SM-B-561836	INDEX PIN ASSY ENR	EA	1
14	5	XDFZZ		80063	A3002013	BEARING, THRUST ENR	EA	1
14	6	PAFFF		80063	SM-D-561829	AZIMUTH RING ASSY ENR	EA	1
14	7	XDFZZ		80063	SM-C-561832-1	RING AZIMUTH SPRT ENR	EA	1
14	8	XDFZZ		80063	A3002014	PLATE, THRUST ENR	EA	1
14	9	XDFZZ		80063	SM-E-561824	FRAME ASS, ELEV ENR	EA	1
14	10	PAFZZ	5315-00-242-7272	96906	MS35678-32	PIN, GROOVED, HEADLES ENR	EA	4
14	11	PAFZZ	5310-00-167-0806	88044	AN960C816	WASHER, FLAT ENR	EA	4
14	12	XDFZZ		80063	SM-B-561825	WHEEL ASSEMBLY ENR	EA	4
14	13	XDFZZ		80063	SM-B-561826-1	AXLE ENR	EA	4
14	14	PAFZZ	5365-00-804-7645	96906	MS16624-4050	RING, RETAINING ENR	EA	4
14	15	XDFZZ		80063	SM-B-561827-1	BRACKET, WHEEL MTG. ENR	EA	4
14	16	PAFZZ	5365-00-598-1840	96906	MS16633-4015	RING, RETAINING ENR	EA	8
14	17	PAFZZ	5310-00-685-3744	88044	AN960C8	WASHER, FLAT ENR	EA	8
14	18	XDFZZ		80063	SM-B-561911	WHEEL ENR	EA	4
14	19	XDFZZ		80063	SM-B-561835-1	AXLE ENR	EA	4
14	20	XDFZZ		80063	SM-B-983109	POINTER, OUTER ENR	EA	1
14	21	XDFZZ		80063	SM-C-561844-1	GUARD, AZIMUTH RING ENR	EA	1
14	22	XDFZZ		80063	SM-B-561843-1	POINTER, INNER ENR	EA	1
14	23	XDFZZ		80063	SM-D-983117	CUP ASSY, ELEVATOR ENR	EA	1
14	24	PAFZZ	5310-00-059-9264	96906	MS21045C6	NUT, SELF-LOCKING HE ENR	EA	1
14	25	PAFZZ		88044	AN509C10R13	SCREW, MACHINE ENR	EA	2
14	26	XDFZZ		80063	SM-8-561912	SCREW, MACHINE ENR	EA	6
14	27	PAFZZ		88044	AN509C8R6	SCREW, MACHINE ENR	EA	4
14	28	PAFZZ	5310-00-263-2862	96906	MS21045C3	NUT, SELF-LOCKING HE ENR	EA	1
14	29	PAFZZ	5306-00-156-2327	88044	AN3C6A	BOLT, MACHINE ENR	EA	8
14	30	PAFZZ		88044	AN509C610R26	SCREW, MACHINE ENR	EA	1
14	31	PAFZZ	5305-00-054-6668	96906	MS51957-43	SCREW, MACHINE ENR	EA	8
14	32	PAFZZ		88044	AN509C416R15	SCREW, MACHINE ENR	EA	2
14	33	PAFZZ	5310-00-982-4988	96906	MS21045C4	NUT, SELF-LOCKING, HE ENR	EA	2
14	34	PAFZZ		88044	AN507C632R7	SCREW, MACHINE ENR	EA	6
14	35	PAFZZ	5305-00-781-9478	96906	MS24694C3	SCREW, MACHINE ENR	EA	4
14	36	PAFZZ	5305-00-054-6649	96906	MS51957-25	SCREW, MACHINE ENR	EA	2



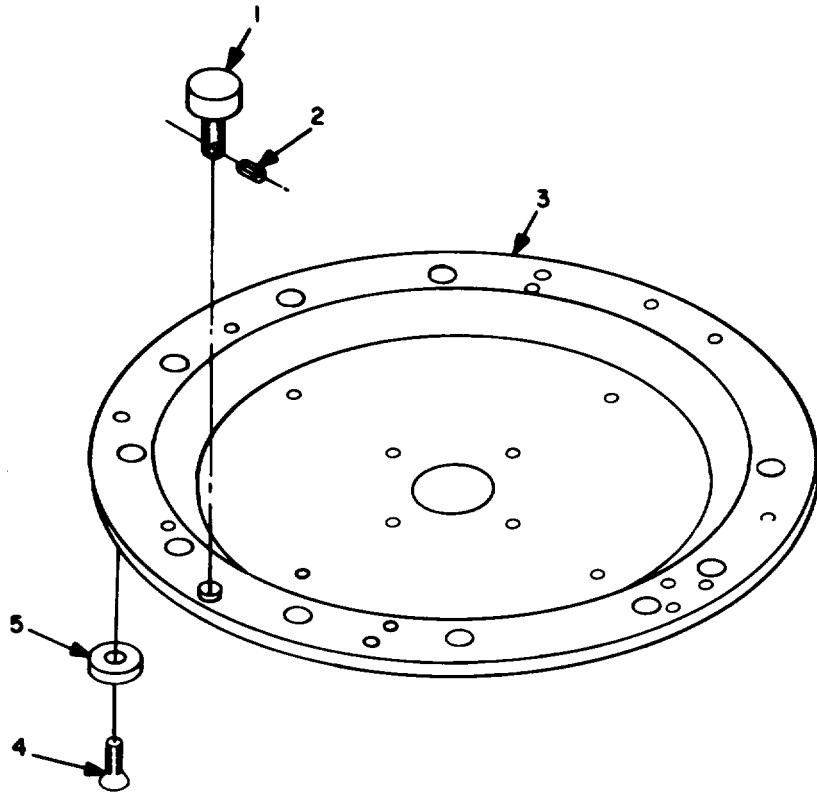
EL8QA020

Figure 15. Index Pin Assembly SM-B-561836.

SECTION II

TM 11-5985-334-34P-1

(1) ILLUSTRATION		(2)	(3)	(4)	(5)	(6)	(7)	(8)
(a) FIG NO.	(b) ITEM NO.	SMR CODE	NATIONAL STOCK NUMBER	FSCM	PART NUMBER	DESCRIPTION USABLE ON CODE	U/M	QTY INC IN UNIT
15	1	PAFZZ		80063	SM-B-561837-1	INDEX PIN ASSEMBLY PIN ENR	EA	1
15	2	PAFZZ	5360-00-469-3710	96906	MS24585C155	SPRING, HELICAL, COMP..... ENR	EA	1
15	3	XDFZZ		80063	SM-B-561838-1	HOUSING..... ENR	EA	1
15	4	PAFZZ	5315-00-058-9756	96906	MS16562-227	PIN, SPRING ENR	EA	1



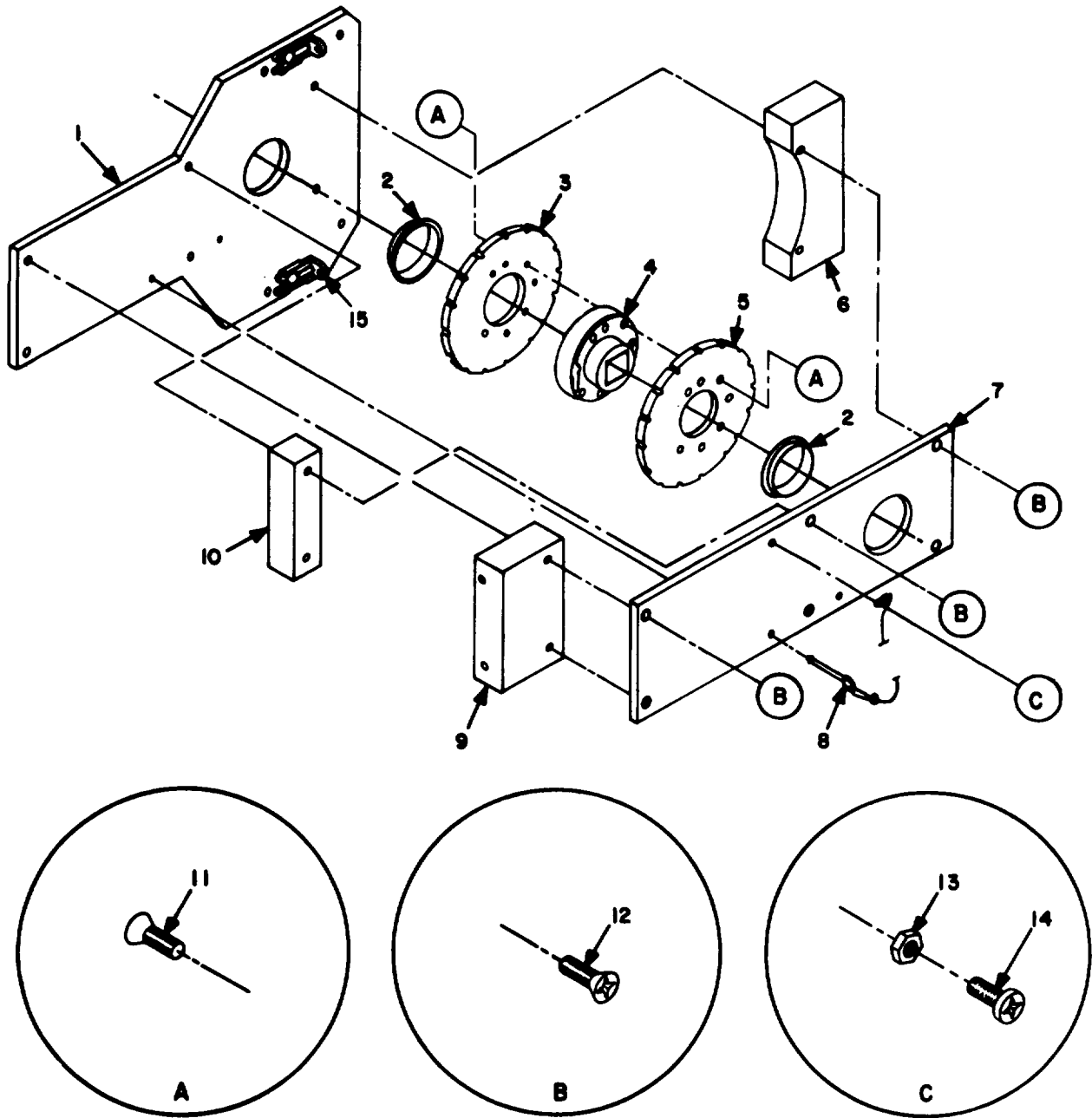
EL8QA02 I

Figure 16. Cup Assembly, Elevator SM-D-983117.

SECTION II

TM 11-5985-334-34P-1

(1) ILLUSTRATION		(2)	(3)	(4)	(5)	(6)	(7)	(8)
(a) FIG NO.	(b) ITEM NO.	SMR CODE	NATIONAL STOCK NUMBER	FSCM	PART NUMBER	DESCRIPTION USABLE ON CODE	U/M	QTY INC IN UNIT
						CUP ASSEMBLY ELEVATOR		
16	1	XDFZZ		80063	SM-B-561841-1	SCREW, STOP ENR	EA	1
16	2	XDFZZ	5315-00-058-9698	96906	MS16562-191	PIN, SPRING ENR	EA	1
16	3	XDFZZ		80063	SM-D-983116	CUP, ELEVATOR ENR	EA	1
16	4	XDFZZ	5305-00-206-3677	88044	AN507C632R4	SCREW, MACHINE ENR	EA	4
16	5	XDFZZ		80063	SM-B-561830-1	SLIP BEARING ENR	EA	4



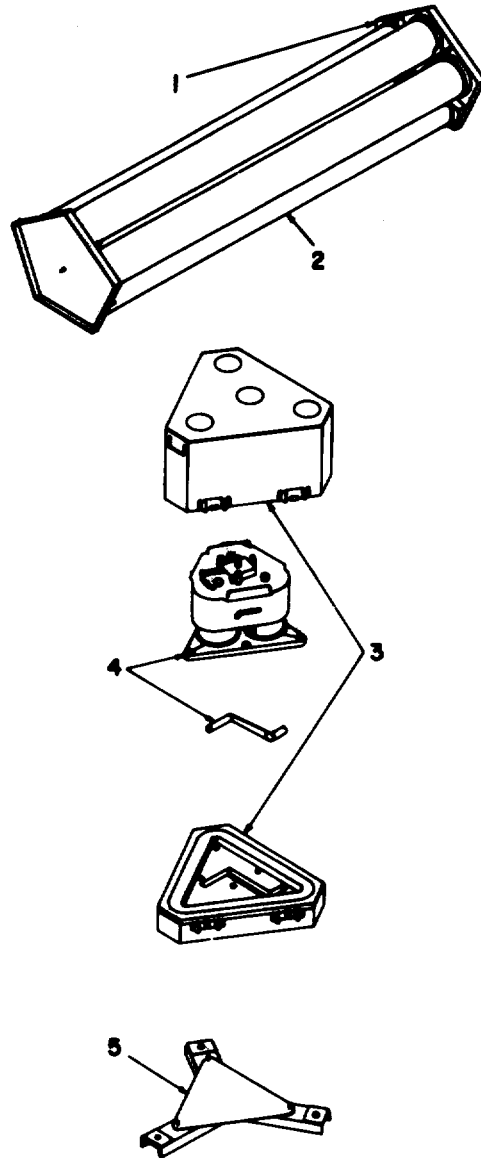
EL8QA022

Figure 17. Reel Assembly A3002068.

SECTION II

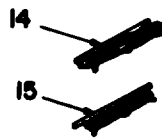
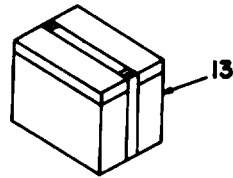
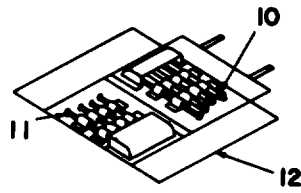
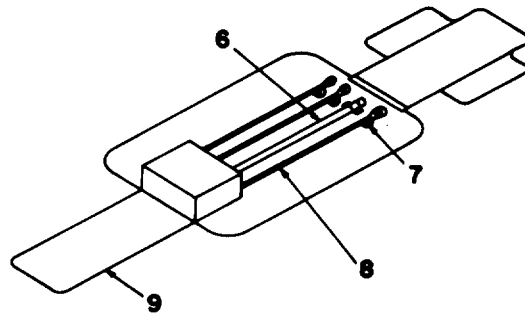
TM 11-5985-334-34P-1

(1) ILLUSTRATION		(2)	(3)	(4)	(5)	(6)	(7)	(8)
(a) FIG NO.	(b) ITEM NO.	SMR CODE	NATIONAL STOCK NUMBER	FSCM	PART NUMBER	DESCRIPTION USABLE ON CODE	U/M	QTY INC IN UNIT
						REEL ASSEMBLY		
17	1	XDFZZ		80063	A3002069	PLATE, REAR ENR	EA	1
17	2	XDFZZ		80063	A3002109	BEARING ENR	EA	2
17	3	XDFZZ		80063	A3002003	FLANGE ENR	EA	1
17	4	XDFZZ		80063	A3002049	HUB ENR	EA	1
17	5	XDFZZ		80063	A3002048	FLANGE ENR	EA	1
17	6	XDFZZ		80063	A3002047	SUPPORT, REEL ENR	EA	1
17	7	XDFZZ		80063	A3002046	PLATE, FRONT ENR	EA	1
17	8	XDFZZ			EC0-3/16-15-C/B- 09094 5IN	PIN & LANYARD ENR	EA	1
17	9	XDFZZ		80063	A3002000	SUPPORT, REEL ENR	EA	1
17	10	XDFZZ		80063	A3002001	SPACER ENR	EA	1
17	11	PAFZZ		96906	MS24694C48	SCREW, MACHINE ENR	EA	14
17	12	PAFZZ		96906	MS24694C113	SCREW, MACHINE ENR	EA	8
17	13	PAFZZ	5310-00-263-2862	96906	MS21045C3	NUT, SELF-LOCKING ENR	EA	1
17	14	PAFZZ	5305-00-059-3660	96906	MS51958-64	SCREW, MACHINE ENR	EA	1
17	15	PAFZZ	5325-00-281-8638	96906	MS21332-1	FASTENER, SNAPSLIDE ENR	EA	2



EL8QA023

Figure 18. Extension Kit MK-2044/G (Sheet 1 of 3).



EL8QA024

Figure 18. Extention Kit MK-2044/G (Sheet 2 of 3).

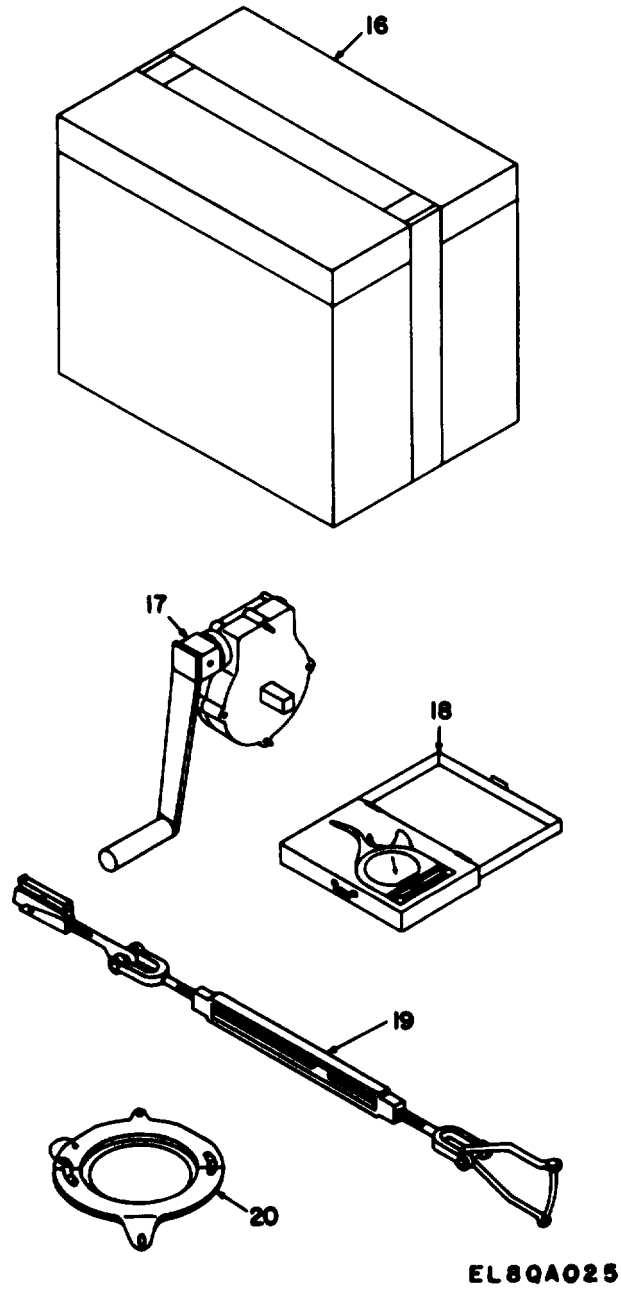
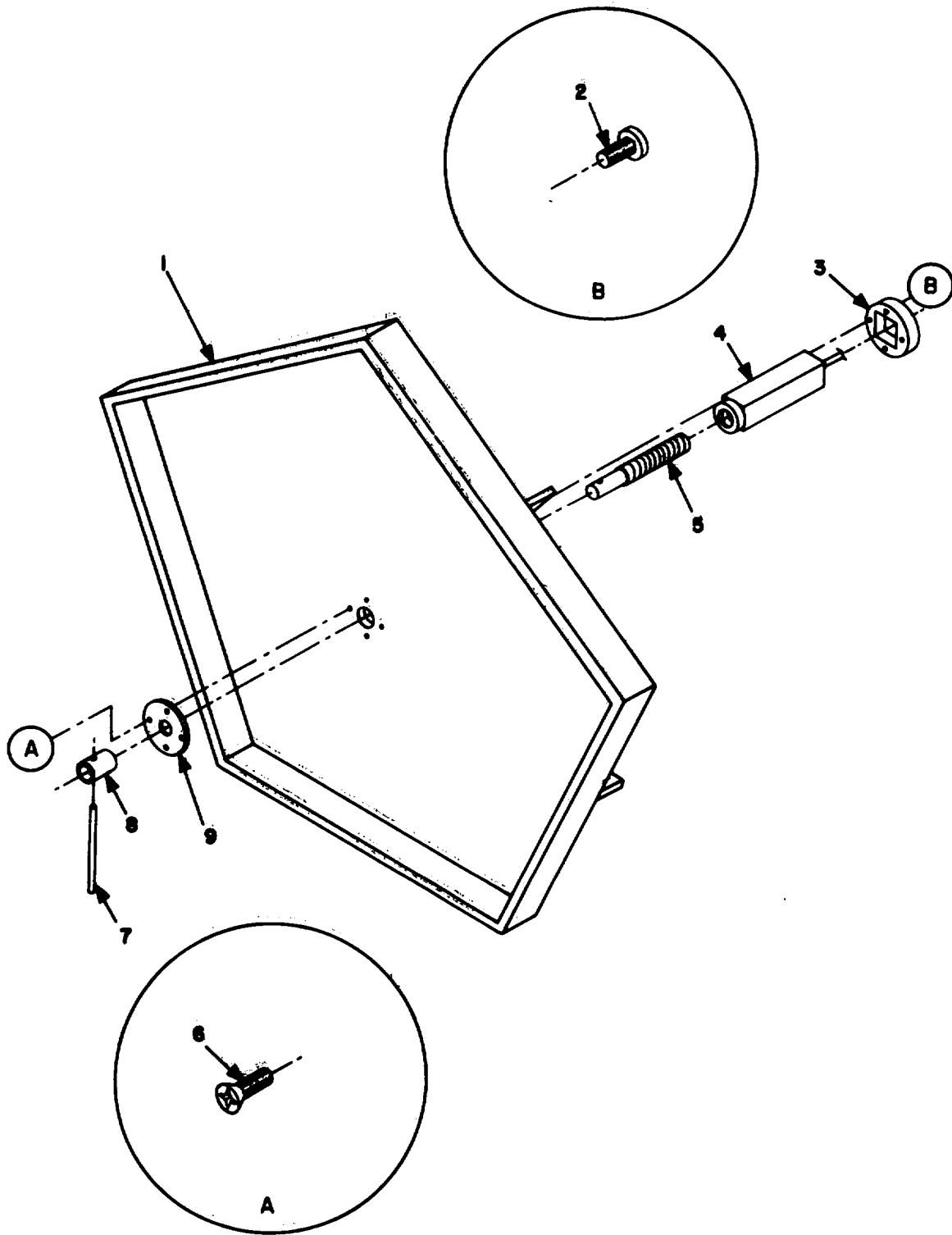


Figure 18. Extention Kit MK-2044/G (Sheet 3 of 3).

SECTION II

TM 11-5985-334-34P-1

(1) ILLUSTRATION		(2)	(3)	(4)	(5)	(6)	(7)	(8)
(a) FIG NO.	(b) ITEM NO.	SMR CODE	NATIONAL STOCK NUMBER	FSCM	PART NUMBER	DESCRIPTION USABLE ON CODE	U/M	QTY INC IN UNIT
						GROUP 00 EXTENSION KIT MK-2044/G		
18	1	PAOFF	5895-01-124-1462	80063	A3002093	MAST CARRIER ASSEMEMH	EA	2
18	2	PAOZZ	5985-00-242-4286	80063	SM-D-561875	MAST SECTIONEMH	EA	10
18	3	PDOFF	5095-01-124-1463	80063	A3002103	TRANSIT CASE ASSEMEMH	EA	2
18	4	PBOFD		80063	A3002095	GUY CONTROL DEVICEEMH	EA	2
18	5	XDOZZ		80063	A3002101	GROUND CLEAT ASSYEMH	EA	2
18	6	PDOZZ	5120-00-892-4713	80083	SM-B-423624	BAR, DIGGINGEMH	EA	1
18	7	PDOZZ		82241	A3002127	EYE, AUXILIARYEMH	EA	3
18	8	PAOZZ		73569	SP0-851	SCREW ANCHOREMH	EA	3
18	9	PDOZZ		80063	A3002102	ANCHOR ROLLEMH	EA	1
18	10	PAOZZ	4030-00-291-9354	80058	GP-112/G	STAKE, GP-112EMH	EA	3
18	11	PAOZZ	4030-00-187-5261	80058	GP-2	STAKE, GUYEMH	EA	5
18	12	PDOZZ		80063	SM-D-983105	STAKE, BAGEMH	EA	1
18	13	PDOZZ	5895-01-124-1464	80063	SM-C-983103-2	GUY, BAGEMH	EA	1
18	14	PAOZZ		80063	A3002079GR1	CONTROL GUY ASSYEMH	EA	3
18	15	PAOZZ		80063	A3002019GR2	CONTROL GUY ASSEMH	EA	3
18	16	PDOZZ	5895-01-124-1465	80063	SM-C-98310-2	ACCESSORY, BAGEMH	EA	1
18	17	PAOHH		80063	A3002070	WINCH ASSEMBLYEMH	EA	1
18	18	PAOZZ		45402	T5-8008-106-00	TENSIOMETEREMH	EA	2
18	19	PAOFF		80063	A3002081	LOCK-OUT ASSYEMH	EA	6
18	20	PAOZZ		80063	A3002088	GUY RING ASSEMBLYEMH	EA	1



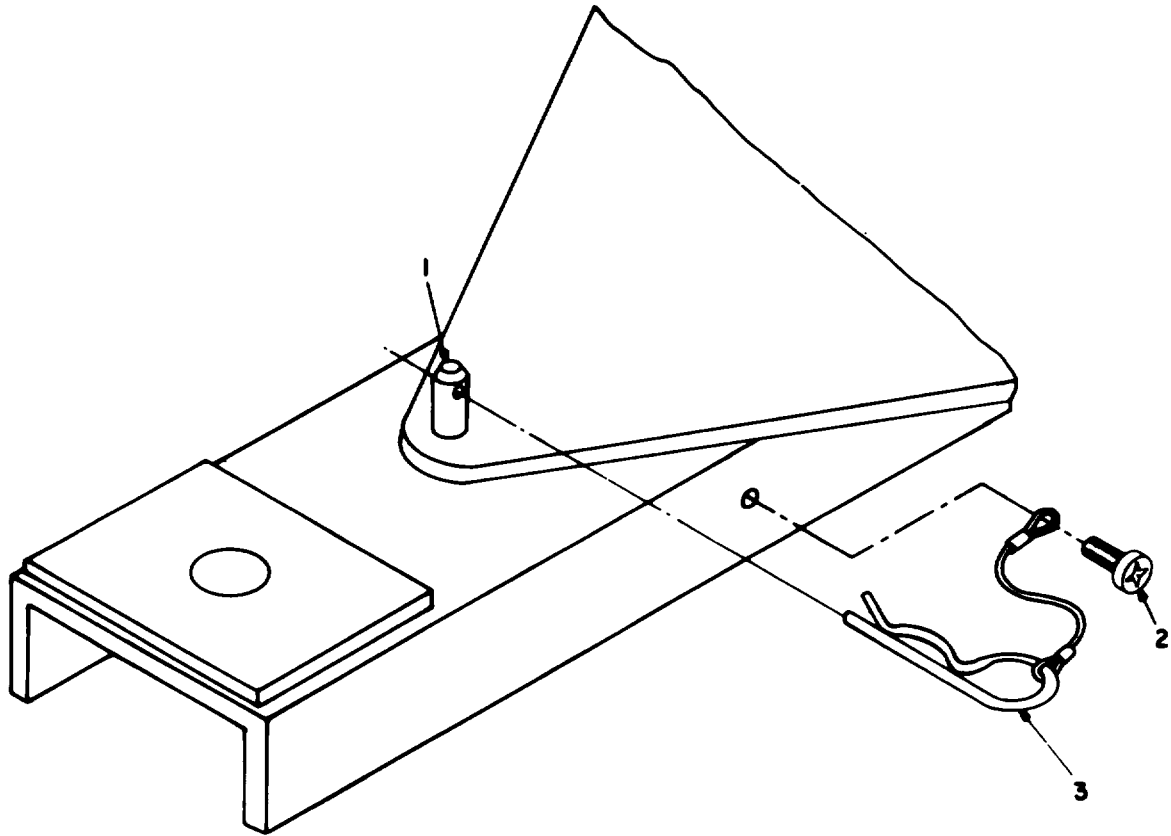
EL8QA026

Figure 19. Mast Carrier Assembly A3002093.

SECTION II

TM 11-5985-334-34P-1

(1) ILLUSTRATION		(2)	(3)	(4)	(5)	(6)	(7)	(8)
(a) FIG NO.	(b) ITEM NO.	SMR CODE	NATIONAL STOCK NUMBER	FSCM	PART NUMBER	DESCRIPTION USABLE ON CODE	U/M	QTY INC. IN UNIT
						MAST CARRIER ASSEMBLY		
19	1	XDFZZ		80063	A3002094-1	CAP, END.....EMH	EA	1
19	2	PAFZZ	5305-00-054-6674	96906	MS51957-49	SCREW, MACHINE.....EMH	EA	4
19	3	XDFZZ		80063	A3001972	STOP.....EMH	EA	1
19	4	XDFZZ		80063	A3001968	NUT PLAIN, HEXAGON.....EMH	EA	1
19	5	XDFZZ		80063	A3001969	STUD, PLAIN.....EMH	EA	1
19	6	PAFZZ		96906	MS35200-43	SCREW, MACHINE.....EMH	EA	4
19	7	PAFZZ	5315-00-844-0498	96906	MS16562-264	PIN, SPRING.....EMH	EA	1
19	8	XDFZZ		80063	A3001970	SLEEVE.....EMH	EA	1
19	9	XDFZZ		80063	A3001971	FLANGE.....EMH	EA	1



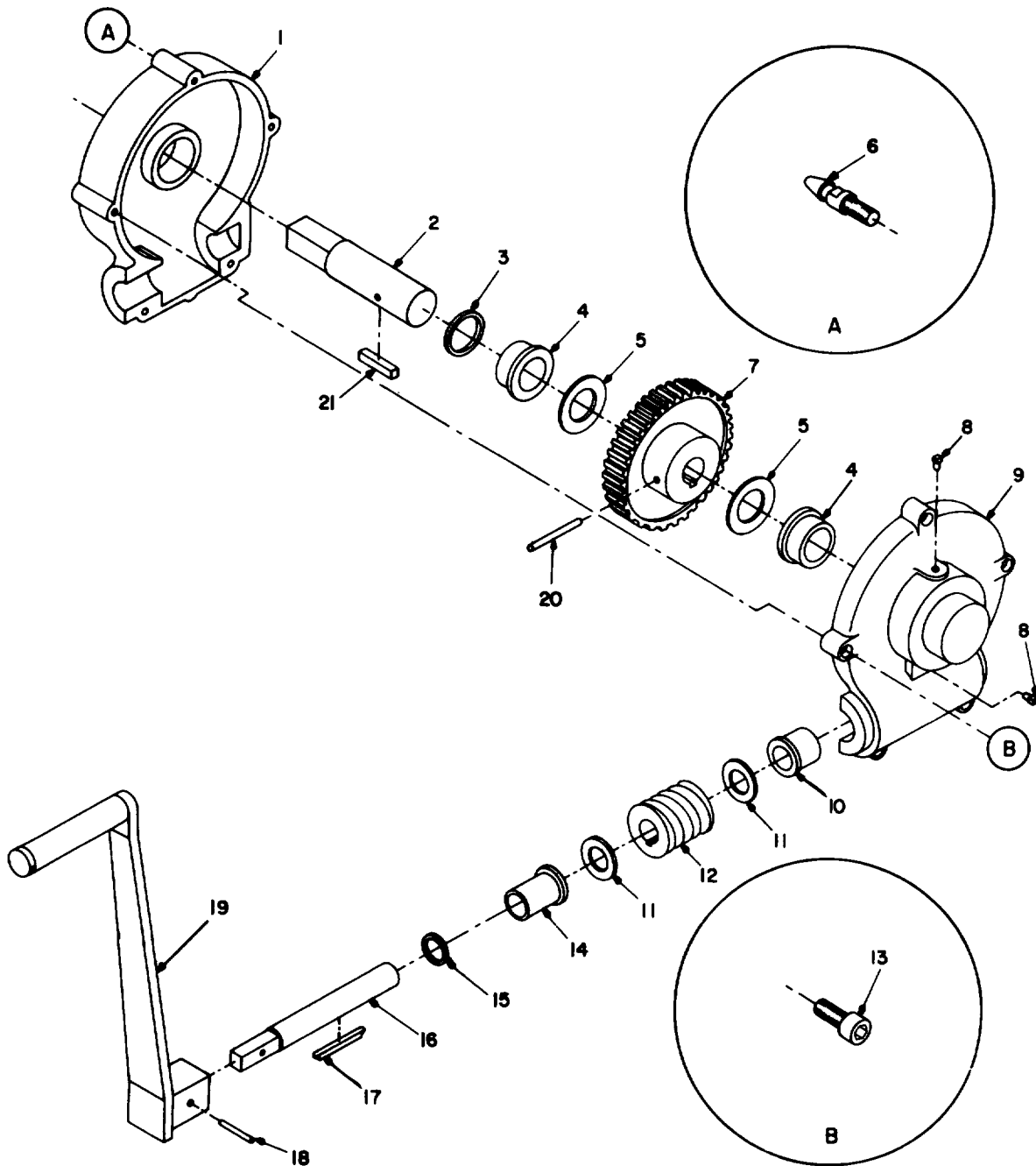
EL8QA027

Figure 20. Ground Cleat Assembly A3002101.

SECTION II

TM 11-5985-334-34P-1

(1) ILLUSTRATION		(2)	(3)	(4)	(5)	(6)	(7)	(8)
(a) FIG NO.	(b) ITEM NO.	SMR CODE	NATIONAL STOCK NUMBER	FSCM	PART NUMBER	DESCRIPTION USABLE ON CODE	U/M	QTY INC. IN UNIT
20	1	PAOZZ	5305-00-734-7121	80063	A3002101-5	PINEMH	EA	3
20	2	PAOZZ		96906	MS51861-65C	SCREW, TAPPIEMH	EA	3
20	3	PAOZZ		80063	A3002141	PIN AND LANEMH	EA	3
						GROUND CLEAT ASSEMBLY		



EL8QA028

Figure 21. Winch Assembly A3002070.

SECTION II

TM 11-5985-334-34P-1

(1) ILLUSTRATION		(2)	(3)	(4)	(5)	(6)	(7)	(8)
(a) FIG NO.	(b) ITEM NO.	SMR CODE	NATIONAL STOCK NUMBER	FSCM	PART NUMBER	DESCRIPTION USABLE ON CODE	U/M	QTY INC. IN UNIT
						WINCH ASSEMBLY		
21	1	XDHZZ		80063	A3002071	BASE, WINCH.....EMH	EA	1
21	2	XDHZZ		80063	A3002005	SHAFT, WORM GEAR.....EMH	EA	1
21	3	PAHZZ		79150	K30-63169	SEAL.....EMH	EA	1
21	4	XDHZZ		80063	A3002002-3	BEARING.....EMH	EA	2
21	5	XDHZZ		80063	A3002008-2	WASHER, THRUST.....EMH	EA	2
21	6	XDHZZ		80063	A3002009	STUD, PLAIN.....EMH	EA	2
21	7	XDHZZ		71041	DB1422RH	WORM GEAR.....EMH	EA	1
21	8	PAHZZ		96906	MS20913-1J	PIPE PLUG.....EMH	EA	2
21	9	XDHZZ		80063	A3002072	COVER, WINCH.....EMH	EA	1
21	10	XDHZZ		80063	A3002002-1	BEARING.....EMH	EA	1
21	11	XDHZZ		80063	A3002008-1	WASHER, THRUST.....EMH	EA	2
21	12	XDHZZ		71041	H1427RH	WORM.....EMH	EA	1
21	13	PAHZZ	5305-00-988-7616	96906	MS16995-52	SCREW, CAP, SOCKET HE.....EMH	EA	5
21	14	XDHZZ		80063	A3002002-2	BEARING.....EMH	EA	1
21	15	XDHZZ		79150	K31-63150	SEAL.....EMH	EA	1
21	16	XDHZZ		80063	A3002004	SHAFT, WORM.....EMH	EA	1
21	17	XDHZZ		80063	A3002006	KEY, WORM.....EMH	EA	1
21	18	PAHZZ	5315-00-587-2705	96906	MS16562-239	PIN, SPRING.....EMH	EA	1
21	19	XDHZZ		80063	A3002050	CRANK ASSEMBLY.....EMH	EA	1
21	20	PAHZZ	5315-00-753-3895	96906	MS16562-256	PIN, SPRING.....EMH	EA	1
21	21	XDHZZ		80063	A3002007	KEY, WORM GEAR.....EMH	EA	1

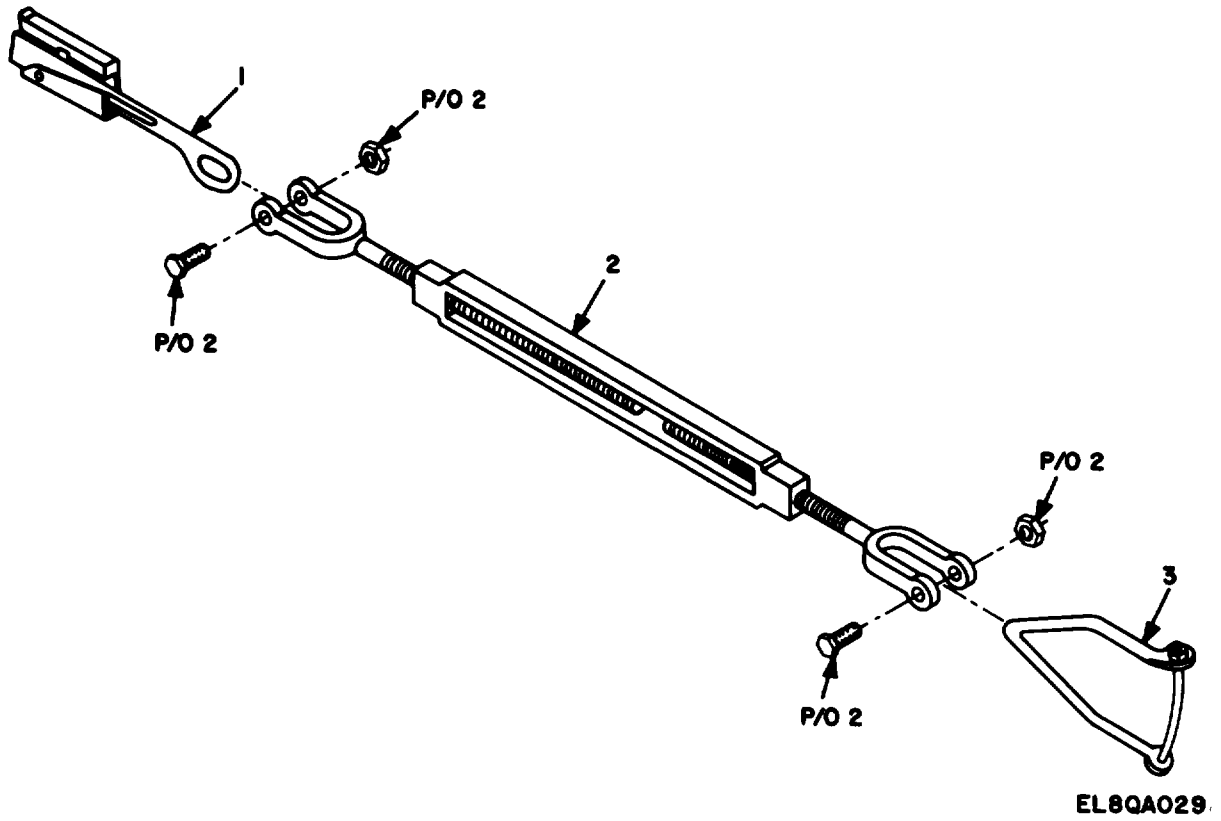
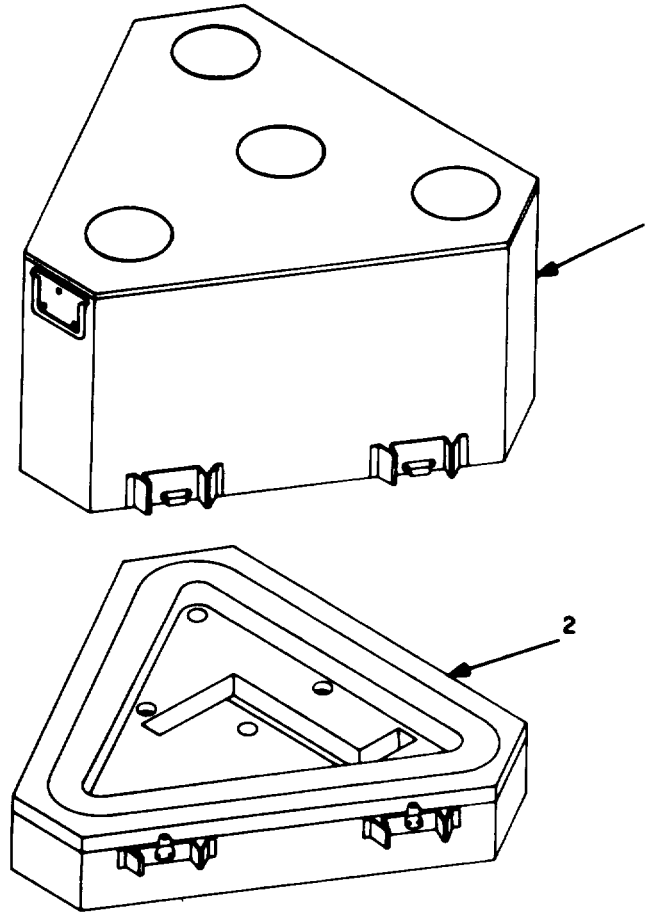


Figure 22. Lock-out Assembly A3002081.

SECTION II

TM 11-5985-334-34P-1

(1) ILLUSTRATION		(2)	(3)	(4)	(5)	(6)	(7)	(8)
(a) FIG NO.	(b) ITEM NO.	SMR CODE	NATIONAL STOCK NUMBER	FSCM	PART NUMBER	DESCRIPTION USABLE ON CODE	U/M	QTY INC. IN UNIT
22	1	PAFZZ	4030-00-292-9856	12708	EC-10 305 J725	LOCK-OUT ASSEMBLY		
22	2	PAFZZ		77777		CABLE CLAMP.....EMH	EA	1
22	3	PAFZZ		74999		TURNBUCKLEEMH	EA	1
						SHACKLE.....EMH	EA	1



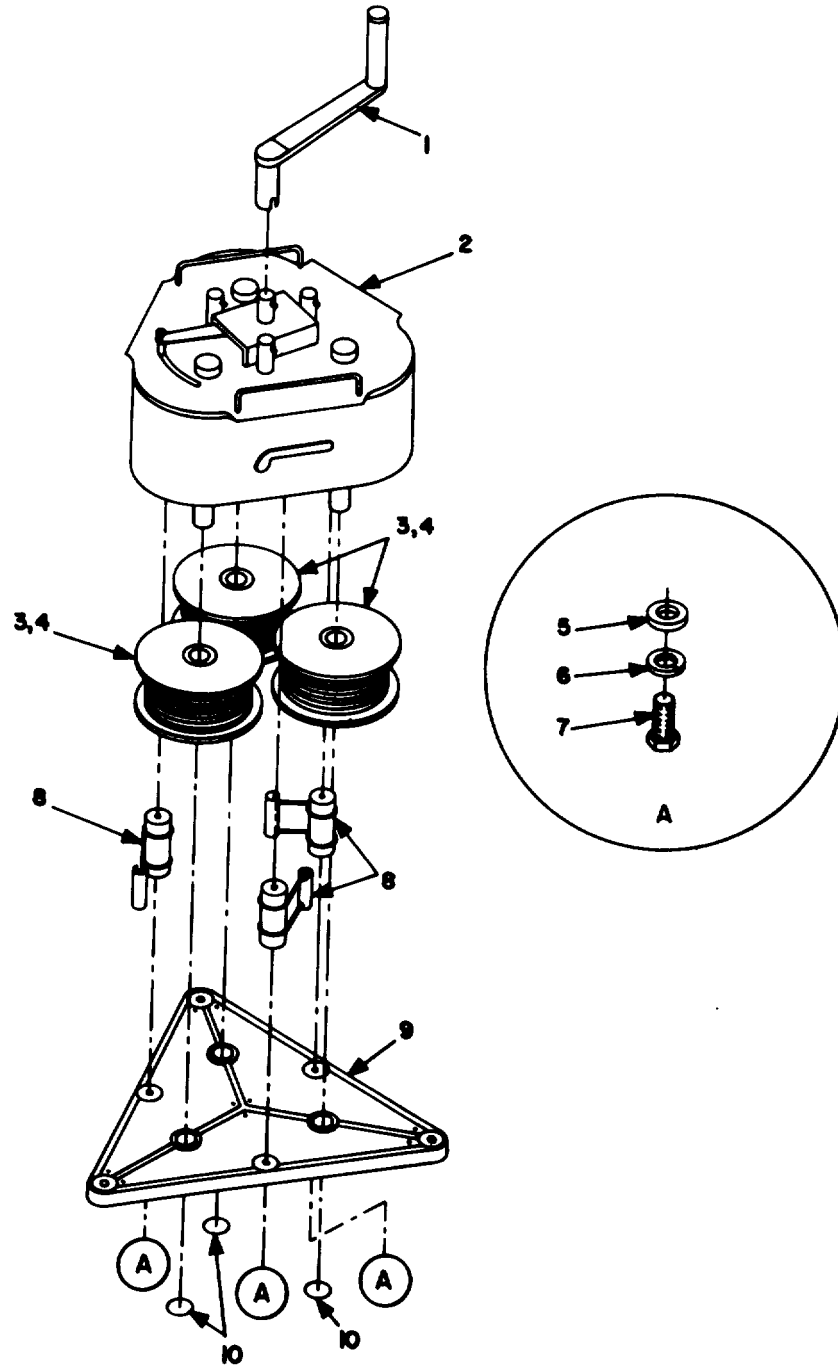
EL8QA030

Figure 23. Transit Case Assembly A3002103.

SECTION II

TM 11-5985-334-34P-1

(1) ILLUSTRATION		(2)	(3)	(4)	(5)	(6)	(7)	(8)
(a) FIG NO.	(b) ITEM NO.	SMR CODE	NATIONAL STOCK NUMBER	FSCM	PART NUMBER	DESCRIPTION USABLE ON CODE	U/M	QTY INC. IN UNIT
23	1	XDFZZ		80063	A3002104	TRANSIT CASE ASSEMBLY		
23	2	XDFZZ		80063	A3002105	CASE TOP ASSEMBLYEMH CASE BOTTOM ASSYEMH	EA EA	1 1



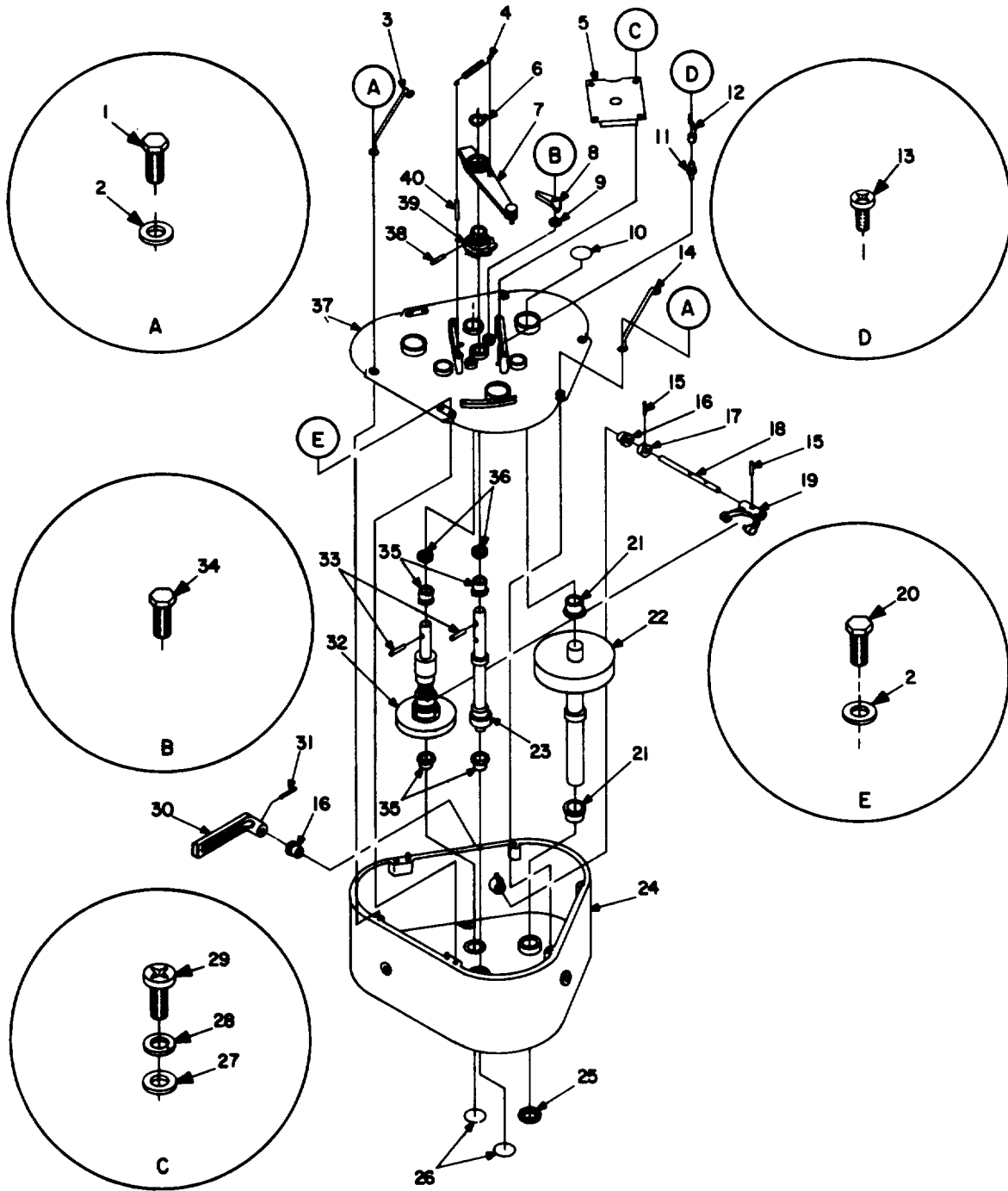
EL8QA03 I

Figure 24. Guy Control Device A3002095.

SECTION II

TM 11-5985-334-34P-1

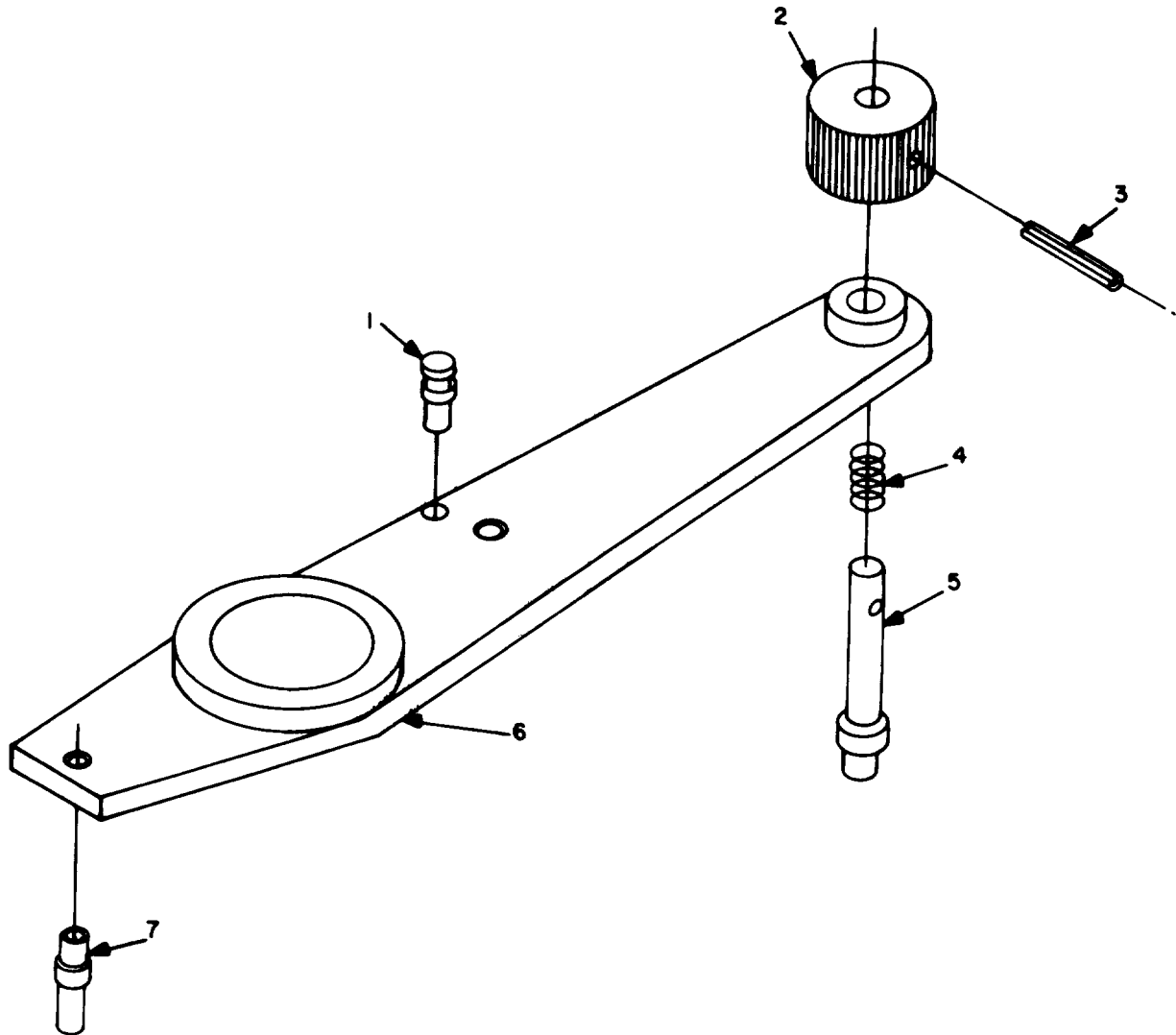
(1) ILLUSTRATION		(2)	(3)	(4)	(5)	(6)	(7)	(8)
(a) FIG NO.	(b) ITEM NO.	SMR CODE	NATIONAL STOCK NUMBER	FSCM	PART NUMBER	DESCRIPTION USABLE ON CODE	U/M	QTY INC. IN UNIT
						GROUP 01 GUY CONTROL DEVICE		
24	1	PAFZZ		80063	A3002061	CRANK HANDLE ASSEMB.....EMH	EA	1
24	2	PAFDD		80063	A3002096	GEAR BOX ASSEMBLY.....EMH	EA	1
24	3	PAFZZ		80063	A3002042	REEL, CABLE.....EMH	EA	3
24	4	PAFZZ		80063	A3002082	CABLE ASSEMBLY.....EMH	EA	3
24	5	XDFZZ		80063	A3002095-3	WASHER, FLAT.....EMH	EA	3
24	6	PAFZZ	5310-00-926-5877	96906	MS35338-16	WASHER, LOCK.....EMH	EA	3
24	7	XDFZZ		80063	A3002095-1	BOLT, MACHINE.....EMH	EA	3
24	8	PAFZZ		80063	A3002057	CABLE RETAINER SPRI.....EMH	EA	3
24	9	XDFZZ		80063	A3002099	BASE ASSEMBLY.....EMH	EA	1
24	10	XDFZZ		80063	A3001983-2	PLUG, SMALL.....EMH	EA	3



EL8QA032

Figure 25. Gear Box Assembly A3002096.

(1) ILLUSTRATION		(2)	(3)	(4)	(5)	(6)	(7)	(8)
(a) FIG NO.	(b) ITEM NO.	SMR CODE	NATIONAL STOCK NUMBER	FSCM	PART NUMBER	DESCRIPTION USABLE ON CODE	U/M	QTY INC. IN UNIT
						GEAR BOX ASSEMBLY		
25	1	XDDZZ		80063	A3002096-12	BOLT, MACHINEEMH	EA	4
25	2	XDDZZ		80063	A3002096-14	WASHER, FLATEMH	EA	6
25	3	XDDZZ		80063	A3002041-1	HANDLE, LIFTINGEMH	EA	1
25	4	XDDZZ		80063	A3001993	SPRING, RETURNEMH	EA	1
25	5	XDDZZ		80063	A3002040	PLATE, COVEREMH	EA	1
25	6	XDDZZ		80063	A3002096-8	RETAINING RINGEMH	EA	1
25	7	PADZZ		80063	A3002039	RATCHET RELEASE ARMEMH	EA	1
25	8	XDDZZ		80063	A3002037	PAWLEMH	EA	2
25	9	XDDZZ		80063	A3002096-6	SPACEREMH	EA	2
25	10	XDDZZ		80063	A3001983-1	PLUG, LARGEEMH	EA	3
25	11	XDDZZ		80063	A3001985	POST, SPRINGEMH	EA	2
25	12	XDDZZ		80063	A3001986	SPRING, LEAFEMH	EA	2
25	13	PADZZ	5305-00-054-6650	96906	MS51957-26	SCREW, MACHINEEMH	EA	2
25	14	XDDZZ		80063	A3002041-2	HANDLE, LIFTINGEMH	EA	1
25	15	PADZZ		96906	MS16562-230	PIN, SPRINGEMH	EA	6
25	16	XDDZZ		80063	A3001974-3	BUSHINGEMH	EA	6
25	17	XDDZZ		80063	A3001977-3	SLEEVEEMH	EA	3
25	18	XDDZZ		80063	A3001982	SHAFT, CLUTCH FORKEMH	EA	3
25	19	PADZZ		80063	A3002035	CLUTCH FORK ASSEMBLYEMH	EA	3
25	20	XDDZZ		80063	A3002096-11	BOLT, MACHINEEMH	EA	2
25	21	XDDZZ		80063	A3001974-1	BUSHINGEMH	EA	6
25	22	PADZZ		80063	A3002033	SHAFT ASSEMBLYEMH	EA	3
25	23	PADZZ		80063	A3002029	SHAFT ASSEMBLYEMH	EA	1
25	24	XDDZZ		80063	A3002097	HOUSINGEMH	EA	1
25	25	PADZZ		06919	CR11050	SEALEMH	EA	3
25	26	XDDZZ		80063	A3001983-2	PLUG, SMALLEMH	EA	4
25	27	XDDZZ		80063	A3002096-13	WASHER, FLATEMH	EA	4
25	28	PADZZ	5310-00-869-9576	96906	A335338-157	WASHER, LOCKEMH	EA	4
25	29	XDDZZ		80063	A3002096-10	SCREW, MACHINEEMH	EA	4
25	30	XDDZZ		80063	A3002036	HANDLE, CLUTCHEMH	EA	3
25	31	PADZZ		96906	MS16562-231	PIN, SPRINGEMH	EA	3
25	32	PADZZ		80063	A3002030	SHAFT ASSEMBLYEMH	EA	3
25	33	PADZZ	5315-00-058-9808	96906	MS16562-253	PIN, SPRINGEMH	EA	4
25	34	XDDZZ		80063	A3001984	BOLT, MODIFIEDEMH	EA	2
25	35	XDDZZ		80063	A3001974-2	BUSHINGEMH	EA	8
25	36	PADZZ		06919	CR7410	SEALEMH	EA	4
25	37	XDDZZ		80063	A3002098	COVEREMH	EA	1
25	38	PADZZ	5319-00-823-8742	96906	MS16562-252	PIN, SPRINGEMH	EA	1
25	39	XDDZZ		80063	A3002038	RATCHETEMH	EA	1
259	40	PADZZ	5315-00-058-9731	98906	M516562-213	PIN, SPRINGEMH	EA	1



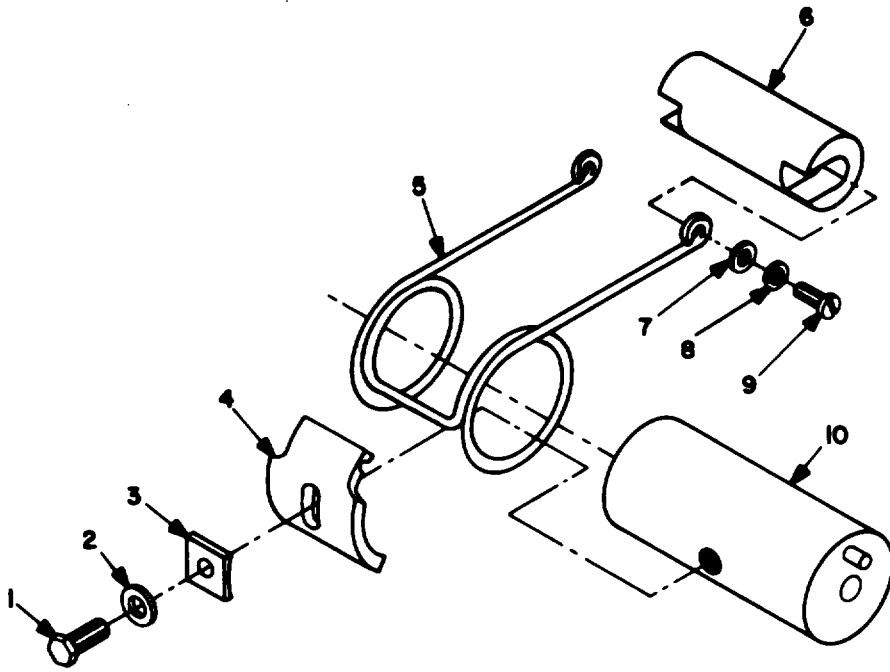
EL8QA033

Figure 26. Ratchet Release Arm Assembly A3002039.

SECTION II

TM 11-5985-334-34P-1

(1) ILLUSTRATION		(2)	(3)	(4)	(5)	(6)	(7)	(8)
(a) FIG NO.	(b) ITEM NO.	SMR CODE	NATIONAL STOCK NUMBER	FSCM	PART NUMBER	DESCRIPTION USABLE ON CODE	U/M	QTY INC. IN UNIT
						RATCHET RELEASE ARM ASSEMBLY		
26	1	XDDZZ		80063	A3001989	POST.....EMH	EA	1
26	2	XDDZZ		80063	A3001992	KNOB.....EMH	EA	1
26	3	PADZZ	5315-00-841-4442	96906	MS16562-224	PIN, SPRING.....EMH	EA	1
26	4	XDDZZ		80063	A3001990	SPRING.....EMH	EA	1
26	5	XDDZZ		80063	A3001991	SHAFT.....EMH	EA	1
26	6	XDDZZ		80063	A3001987	ARM.....EMH	EA	1
26	7	XDDZZ		80063	A3001988	PUSH PIN.....EMH	EA	2



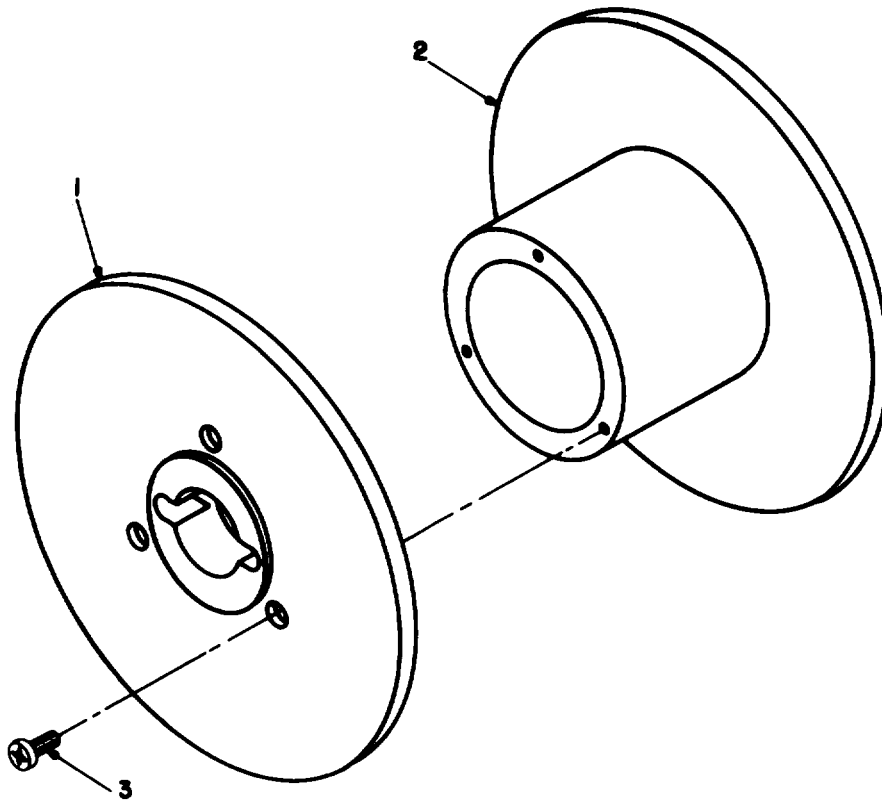
EL8QA034

Figure 27. Cable Retainer Spring Assembly A3002057.

SECTION II

TM 11-5985-334-34P-1

(1) ILLUSTRATION		(2)	(3)	(4)	(5)	(6)	(7)	(8)
(a) FIG NO.	(b) ITEM NO.	SMR CODE	NATIONAL STOCK NUMBER	FSCM	PART NUMBER	DESCRIPTION USABLE ON CODE	U/M	QTY INC. IN UNIT
						CABLE RETAINER SPRING ASSEMBLY		
27	1	XDFZZ		80063	A3002057-6	BOLT, MACHINEEMH	EA	1
27	2	XDFZZ		80063	A3002057-10	WASHER, FLATEMH	EA	1
27	3	XDFZZ		80063	A3002022	SADDLEEMH	EA	1
27	4	XDFZZ		80063	A3001995	CLAPEMH	EA	1
27	5	XDFZZ		80063	A3002058	SPRINGEMH	EA	1
27	6	XDFZZ		80063	A3002023	PRESSURE BLOCKEMH	EA	1
27	7	XDFZZ	5310-00-883-9384	96906	MS15795-842	WASHER, FLATEMH	EA	2
27	8	PAFZZ	5310-00-869-9576	96906	MS35338-138	WASHER, LOCKEMH	EA	2
27	9	XDFZZ		80063	A3002057-7	SCREW, MACHINE, MACHINEEMH	EA	2
27	10	XDFZZ		80063	A3001994	POST ASSEMBLYEMH	EA	1



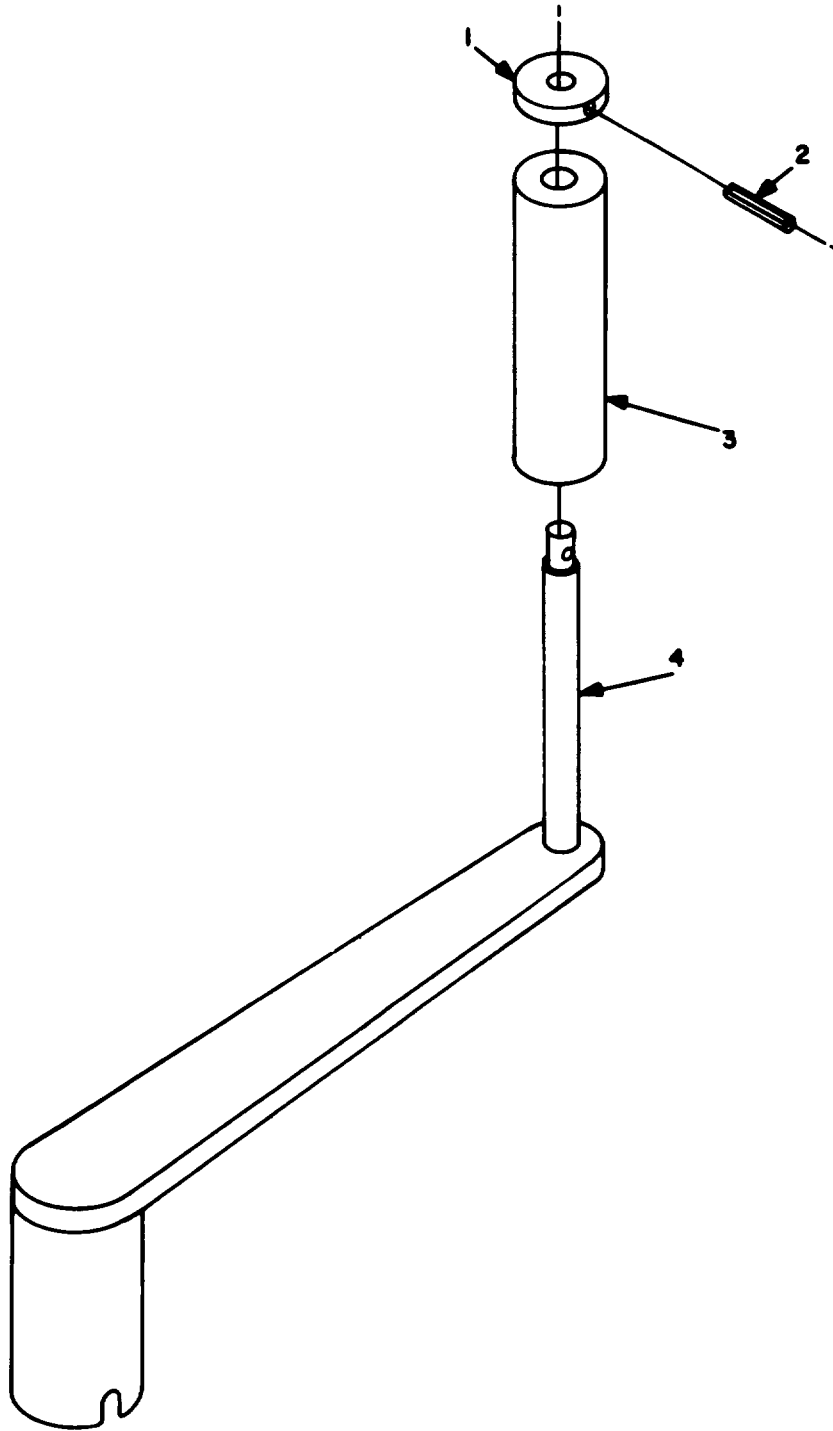
EL8QA035

Figure 28. Reel Assembly A3002042.

SECTION II

TM 11-5985-334-34P-1

(1) ILLUSTRATION		(2)	(3)	(4)	(5)	(6)	(7)	(8)
(a) FIG NO.	(b) ITEM NO.	SMR CODE	NATIONAL STOCK NUMBER	FSCM	PART NUMBER	DESCRIPTION USABLE ON CODE	U/M	QTY INC. IN UNIT
28	1	XDFZZ		80063	A3002044	REEL ASSEMBLY		
28	2	XDFZZ		80063	A3002043	FLANGEEMH	EA	1
28	3	PAFZZ	5305-00-939-9189	96906	MS35275-264	BODYEMH	EA	1
						SCREW, MACHINEEMH	EA	3



EL8QA036

Figure 29. Crank Handle Assembly A3002067.

SECTION II

TM 11-5985-334-34P-1

(1) ILLUSTRATION		(2)	(3)	(4)	(5)	(6)	(7)	(8)
(a) FIG NO.	(b) ITEM NO.	SMR CODE	NATIONAL STOCK NUMBER	FSCM	PART NUMBER	DESCRIPTION USABLE ON CODE	U/M	QTY INC. IN UNIT
29	1	XAFZZ	5315-00-823-8747	80063	A3001999	CRANK HANDLE ASSEMBLY		
29	2	PAFZZ		96906	MS16562-218	CAPEMH	EA	1
29	3	XAFZZ		80063	A3001998	PIN, SPRINGEMH	EA	1
29	4	XAFZZ		80063	A3001991	GRIPEMH	EA	1
						POSTEMH	EA	1

NATIONAL STOCK NUMBER AND PART NUMBER INDEX

STOCK NUMBER		FIG. NO.	ITEM NO.	STOCK NUMBER		FIG. NO.	ITEM NO.
5305-00-050-9234		4	8	4030-00-291-9354		18	10
5305-00-054-5646		10	25	4030-00-292-9856		22	3
5305-00-054-6649		14	36	5306-00-405-4588		8	1
5305-00-054-6650		7	4	5360-00-469-3710		15	2
5305-00-054-6668		14	31	5310-00-550-5054		4	6
5305-00-054-6674		19	2	5306-00-582-9009		12	11
5315-00-058-9698		16	2	5306-00-582-9588		2	1
5315-00-058-9731		25	40	5315-00-587-2705		21	18
5315-00-058-9756		15	4	5365-00-598-1840		14	16
5315-00-058-9808		25	33	5310-00-685-3744		14	17
5305-00-059-3660		17	14	5315-00-753-3893		6	2
5310-00-059-9263		11	6	5315-00-153-3895		21	20
5310-00-059-9264		2	4	5305-00-181-9478		14	35
5310-00-059-9264		12	10	5315-00-804-4170		13	12
5310-00-059-9264		14	24	5365-00-804-7645		14	14
5306-00-150-9527		10	28	5315-00-823-8742		25	38
5306-00-156-2327		14	29	5315-00-823-8747		29	2
5306-00-156-2333		5	2	5310-00-823-8835		10	24
5306-00-156-2339		3	2	5310-00-823-8835		13	1
5306-00-156-2339		10	29	5305-00-824-2029		10	20
5306-00-156-2344		13	5	5310-00-838-7285		14	3
4030-00-159-7127		8	3	5315-00-840-0906		11	1
5310-00-167-0806		14	11	5315-00-841-4442		26	3
5310-00-167-0812		5	4	5315-00-844-0498		19	7
5310-00-167-0812		11	5	5310-00-869-9576		25	28
5120-00-169-2664		1	6	5310-00-869-9516		27	8
5306-00-180-1921		13	2	5310-00-883-9384		27	7
4030-00-187-5261		1	21	5120-00-892-4713		1	16
4030-00-187-5261		18	11	5120-00-892-4713		18	6
5985-00-189-6629		12	5	5310-00-926-5877		24	6
5305-00-206-3677		16	4	5310-00-933-8118		10	26
5305-00-207-2793		10	23	5305-00-939-9189		28	3
5985-00-237-0728		1	7	3950-00-954-0526		5	1
5985-00-242-4286		1	3	5310-00-982-4988		3	3
5985-00-242-4286		18	2	5310-00-982-4988		10	18
5315-00-242-7272		14	10	5310-00-982-4988		13	4
5985-00-244-1693		1	2	5310-00-982-4988		14	33
5310-00-263-2862		5	3	5305-00-988-7616		21	13
5310-00-263-2862		10	21	5975-01-012-5445		10	4
5310-00-263-2862		14	28	5895-01-124-1462		18	1
5310-00-263-2862		17	13	5895-01-124-1463		18	3
5310-00-268-6025		13	3	5895-01-124-1464		18	13
5325-00-281-8638		17	15	5895-01-124-1465		18	16
5365-00-282-7120		10	31	5985-01-124-5431		10	11
5365-00-286-8718		12	15	5985-01-124-8752		1	23
4030-00-291-9354		1	20	5985-01-124-8753		1	5

FSCM	PART NUMBER	FIGURE NO.	ITEM NO.	FSCM	PART NUMBER	FIGURE NO.	ITEM NO.
88044	AN3C14A	5	2	80063	A3001970	19	8
88044	AN3C17A	10	27	80063	A3001971	19	9
88044	AN3C5A	10	28	80063	A3001972	19	3
88044	AN3C6A	14	29	80063	A3001974-1	25	21
88044	AN315C5R	13	3	80063	A3001974-2	25	35
88044	AN4C14A	13	5	80063	A3001974-3	25	16
88044	AN4C7A	3	2	80063	A3001977-3	25	17
88044	AN4C7A	10	29	80063	A3001982	25	18
88044	AN5C12A	13	2	80063	A3001983-1	25	10
88044	AN507C428R12	10	19	80063	A3001983-2	24	10
88044	AN507C632R4	16	4	80063	A3001983-2	25	26
88044	AN507C632R7	14	34	80063	A3001984	25	34
88044	AN507C832R7	12	13	80063	A3001985	25	11
88044	AN509C10R10	10	22	80063	A3001986	25	12
88044	AN509C10R13	14	25	80063	A3001987	26	6
88044	AN509C416R11	10	23	80063	A3001988	26	7
88044	AN509C416R14	10	17	80063	A3001989	26	1
88044	AN509C416R15	14	32	80063	A3001990	26	4
88044	AN509C616R17	12	9	80063	A3001991	26	5
88044	AN509C616R26	14	30	80063	A3001992	26	2
88044	AN509C8R6	14	27	80063	A3001993	25	4
88044	AN6C13A	2	1	80063	A3001994	27	10
88044	AN6C17A	12	11	80063	A3001995	27	4
88044	AN960C10L	5	4	80063	A3001997	29	4
88044	AN960C10L	11	5	80063	A3001998	29	3
88044	AN960C8	14	17	80063	A3001999	29	1
88044	AN960C816	14	11	80063	A3002000	17	9
80063	A3001968	19	4	80063	A3002001	17	10
80063	A3001969	19	5	80063	A3002002-1	21	10

NATIONAL STOCK NUMBER INDEX

FSCM	PART NUMBER	FIGURE	ITEM	FSCM	PART NUMBER	FIGURE	ITEM
		NO.	NO.			NO.	NO.
80063	A3002002-2	21	14	80063	A3002096-14	25	2
80063	A3002002-3	21	4	80063	A3002096-6	25	9
80063	A3002003	17	3	80063	A3002096-8	25	6
80063	A3002004	21	16	80063	A3002097	25	24
80063	A3002005	21	2	80063	A3002098	25	37
80063	A3002006	21	17	80063	A3002099	24	9
80063	A1002007	21	21	80063	A3002101	18	5
80063	A3002008-1	21	11	80063	A3002101-5	20	1
80063	A3002008-2	21	5	80063	A3002102	1	19
80063	A3002009	21	6	80063	A3002102	18	9
80063	A3002011	10	13	80063	A3002103	18	3
80063	A3002012	9	1	80063	A3002104	23	1
80063	A3002013	14	5	80063	A3002105	23	2
80063	A3002014	14	8	80063	A3002109	17	2
80063	A3302015-1	10	14	82241	A3002127	1	17
80063	A3002015-2	10	16	82241	A3002127	18	7
80063	A3002018-1	10	8	06979	CR11050	25	25
80063	A3002018-2	10	9	06919	CR7410	25	36
80063	A3002019	10	3	71041	D1422RH	21	7
80063	A3002022	27	3	12708	EC-10	22	1
80063	A3002023	27	6	09094	EC0-3/16-15-C/B-5IN	17	8
80063	A3002024	10	2	81348	GGG-H-86-2.5L8	1	13
80063	A3002029	25	23	80058	GP-112/G	1	20
80063	A3002030	25	32	80058	GP-112/G	18	10
80063	A3002033	25	22	80058	GP-2	1	21
80063	A3002035	25	19	80058	GP-2	18	11
80063	A3002036	25	30	71041	H1427RH	21	12
80063	A3002037	25	8	74999	J725	22	3
80063	A3002038	25	39	81348	KK-B-151BELT	1	15
80063	A3002039	25	7	81348	KK-B-151STRAP	1	14
80063	A3002040	25	5	79150	K30-63169	21	3
80063	A3002041-1	25	3	79150	K31-63150	21	15
80063	A3002041-2	25	14	96906	MS15795-809	4	6
80063	A3002042	24	3	96906	MS15795-842	27	7
80063	A3002043	28	2	96906	MS16562-191	16	2
80063	A3002044	28	1	96906	MS16562-210	11	1
80063	A3002046	17	7	96906	MS16562-213	25	40
80063	A3002047	17	6	96906	MS16562-218	29	14
80063	A3002048	17	5	96906	MS16562-224	26	3
80063	A3002049	17	4	96906	MS16562-226	6	2
80063	A3002050	21	19	96906	MS16562-227	15	4
80063	A3002052	13	7	96906	MS16562-230	25	15
80063	A3002053	13	6	96906	MS16562-231	25	31
80063	A3002056	1	9	96906	MS16562-239	21	18
80063	A3002057	24	8	96906	MS16562-252	25	38
80063	A3002057-10	27	2	96906	MS16562-253	25	33
80063	A3002057-6	27	1	96906	MS16562-256	21	20
80063	A3002057-7	27	9	96906	MS16562-264	19	7
80063	A3002058	27	5	96906	MS16624-4037	10	31
80063	A3002067	24	1	96906	MS16624-4050	14	14
80063	A3002068	10	11	96906	MS16633-4015	14	16
80063	A3002069	17	1	96906	MS16633-4037	11	15
80063	A3007070	18	17	96906	MS16995-52	21	13
80063	A3002071	21	1	96906	MS20913-1J	21	8
80063	A3002072	21	9	96906	MS21045C3	5	3
80063	A3002074	9	3	96906	MS21045C3	10	21
80063	A3002075	9	2	96906	MS21045C3	14	28
80063	A3002077GR1	1	24	96906	MS21045C3	17	13
80063	A3002077GR2	1	25	96906	MS21045C4	3	3
80063	A3002077GR3	1	26	96906	MS21045C4	10	18
80063	A3002079GR1	18	14	96906	MS21045C4	13	4
80063	A3002079GR2	18	15	96906	MS21045C4	14	33
80063	A3002081	18	19	96906	MS21045C5	10	24
80063	A3002082	24	4	96906	MS21045C5	13	1
80063	A3002088	1	10	96906	MS21045C6	2	4
80063	A3002088	18	20	96906	MS21045C6	12	10
80063	A3002089	3	1	96906	MS21045C6	14	24
80063	A3002090	3	4	96906	MS21046C3	11	6
80063	A3002091	1	8	96906	MS21332-1	17	15
80063	A3002092	4	1	96906	MS24585C155	15	2
80063	A3002093	18	1	96906	MS24694C113	17	12
80063	A3002094-1	19	1	96906	MS24694C3	14	35
80063	A3002095	18	4	96906	MS24694C48	17	11
80063	A3002095-1	24	7	96906	MS24694C54	11	4
80063	A3002095-3	24	5	96906	MS24694C56	10	20
80063	A3002096	24	2	96906	MS35200-43	19	6
80063	A3002096-10	25	29	96906	MS352575-264	28	3
80063	A3002096-11	25	20	96906	MS35338-135	10	26
80063	A3002096-12	25	1	96906	MS35338-138	4	7
80063	A3002096-13	25	27	96906	MS35338-138	27	8

NATIONAL STOCK NUMBER INDEX

FSCM	PART NUMBER	FIGURE	ITEM	FSCM	PART NUMBER	FIGURE	ITEM
		NO.	NO.			NO.	NO.
96906	MS35338-157	25	28	80063	SM-B-561911	14	18
96906	MS35338-16	24	6	80063	SM-B-561912	14	26
96906	MS35678-19	13	12	80063	SM-B-561916-1	14	1
96906	MS35678-32	14	10	80063	SM-B-561917-1	12	14
96906	MS35678-4	7	5	80063	SM-B-561924	4	3
96906	MS51922-22	9	4	80063	SM-B-983102	10	7
96906	MS51957-12	10	25	80063	SM-B-983109	14	20
96906	MS51957-25	14	36	80063	SM-C-423574	5	1
96906	MS51957-26	7	4	80063	SM-C-561816	13	8
96906	MS51957-43	14	31	80063	SM-C-561817-1	13	14
96906	MS51957-49	19	2	80063	SM-C-561832-1	14	7
96906	MS51957-68	4	8	80063	SM-C-561844-1	14	21
96906	MS51958-64	17	14	80063	SM-C-561864	1	11
96906	MS9549-12	14	3	80063	SM-C-561865	7	2
80063	SC-C-99880	8	1	80063	SM-C-561918-1	12	4
80063	SC-C-99879	8	2	80063	SM-C-728942	11	2
80063	SC-C-99881	8	3	80063	SM-C-983103-1	1	23
80063	SM-B-423624	1	16	80063	SM-C-983103-2	18	13
80063	SM-B-423624	18	6	80063	SM-C-983104	1	5
80063	SM-B-423625	11	3	80063	SM-C-983104-2	18	16
80063	SM-B-540127	6	4	80063	SM-C-983101	12	2
80063	SM-B-540128	6	3	80063	SM-C-983110	5	5
80063	SM-B-540138	6	1	80063	SM-C-983115	10	12
80063	SM-B-561809-1	12	7	80063	SM-D-561805	10	6
80063	SM-B-561810-1	12	8	80063	SM-D-561808	12	5
80063	SM-B-361818	13	10	80063	SM-D-561829	14	6
80063	SM-B-561819-1	13	11	80063	SM-D-561846	10	10
80063	SM-B-561820-1	13	13	80063	SM-D-561866	7	1
80063	SM-B-561821-1	12	12	80063	SM-D-561874	1	7
80063	SM-B-561822-1	12	3	80063	SM-D-561875	1	3
80063	SM-B-561825	14	12	80063	SM-D-561875	18	2
80063	SM-B-561826-1	14	13	80063	SM-D-561881	1	2
80063	SM-B-561827-1	14	15	80063	SM-D-561883	2	2
80063	SM-B-561830-1	16	5	80063	SM-D-561889	1	6
80063	SM-B-561834-1	14	2	80063	SM-D-983101	1	4
80063	SM-B-561835-1	14	19	80063	SM-D-983105	1	22
80063	SM-B-561836	14	4	80063	SM-D-983105	18	12
80063	SM-B-561837-1	15	1	80063	SM-D-983106	1	1
80063	SM-B-561838-1	15	3	80063	SM-D-983111	1	12
80063	SM-B-561841-1	16	1	80063	SM-D-983112	12	1
80063	SM-B-561843-1	14	22	80063	SM-D-993113	10	5
80063	SM-B-561847	13	9	80063	SM-D-983114	10	1
80063	SM-B-561854-1	12	6	80063	SM-D-983116	16	3
80063	SM-B-561855	10	4	80063	SM-D-983117	14	23
80063	SM-B-561856	10	15	80063	SM-E-561824	14	9
80063	SM-B-561867-1	7	3	80063	SM-E-561882	2	3
80063	SM-B-561871	4	4	73569	SPO-851	1	18
80063	SM-B-561872	4	5	73569	SPO-851	18	8
80063	SM-B-561873	4	2	45402	T5-8008-106-00	18	18
80063	SM-B-561879-1	5	6	77777	305	22	2
80063	SM-B-561892GR3	10	30				

LATEST NATIONAL STOCK NUMBER AND PART NUMBER ASSIGNMENTS

STOCK NUMBER	FIGURE NO.	ITEM NO.
5305-00-054-6650	25	13
5305-00-734-7121	20	2

FSCM	PART NUMBER	FIGURE NO.	ITEM NO.
80063	A3002141	20	3
96906	MS51861-65C	20	2
96906	MS51957-26	25	13

By Order of the Secretary of the Army:

Official:

ROBERT M. JOYCE
Major General, United States Army
The Adjutant General

E. C. MEYER
General, United States Army
Chief of Staff

Distribution:

To be distributed in accordance with DA Form 12-51, Direct Support and General Support Maintenance requirements for AB-621/G.

***U. S. GOVERNMENT PRINTING OFFICE : 1992 O 311-831 (61121)**

This page only for NON-SOFTWARE-related TM errors/improvements.

RECOMMENDED CHANGES TO EQUIPMENT TECHNICAL PUBLICATIONS



THEN...JOT DOWN THE DOPE ABOUT IT ON THIS FORM. CAREFULLY TEAR IT OUT. FOLD IT AND DROP IT IN THE MAIL.

SOMETHING WRONG WITH THIS PUBLICATION?

FROM: (PRINT YOUR UNIT'S COMPLETE ADDRESS)

DATE SENT

PUBLICATION NUMBER

PUBLICATION DATE

PUBLICATION TITLE

BE EXACT PIN-POINT WHERE IT IS

PAGE NO. PARA-GRAPH FIGURE NO. TABLE NO.

IN THIS SPACE TELL WHAT IS WRONG AND WHAT SHOULD BE DONE ABOUT IT:

TEAR ALONG PERFORATED LINE

PRINTED NAME GRADE OR TITLE AND TELEPHONE NUMBER

SIGN HERE

DA FORM 2028-2
1 JUL 79

PREVIOUS EDITIONS ARE OBSOLETE

P.S.—IF YOUR OUTFIT WANTS TO KNOW ABOUT YOUR RECOMMENDATION MAKE A CARBON COPY OF THIS AND GIVE IT TO YOUR HEADQUARTERS

PIN: 052146-000